

±5,482 SF OFFICE SPACE FOR LEASE

WOODLEA HALL

42850 Crescent Loop, Babcock Ranch, FL



CLICK TO VIEW
LISTING VIDEO



EXCLUSIVE RETAIL LEASING

KATZ & ASSOCIATES

RETAIL REAL ESTATE ADVISORS

Lauren Powell
ASSOCIATE

laurenpowell@katzretail.com
(561) 869-4348

Allan Carlisle
SENIOR DIRECTOR

allancarlisle@katzretail.com
(561) 385-4791

Jason Lund
SENIOR DIRECTOR

jasonlund@dkatz.com
(301) 502-5947

Jon Cashion
PRINCIPAL

joncashion@katzretail.com
(561) 302-7071



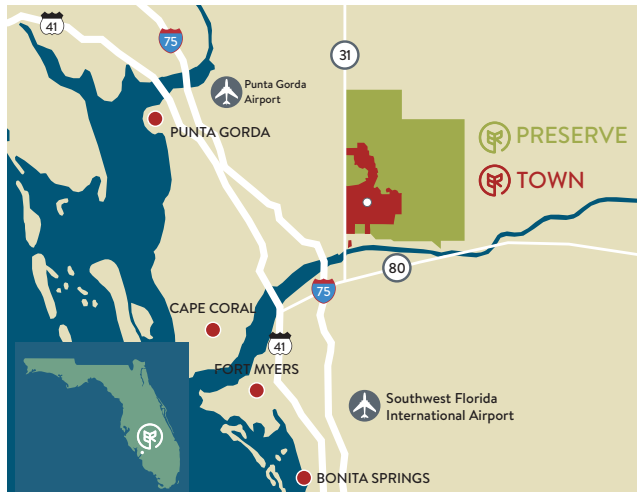
BABCOCK RANCH

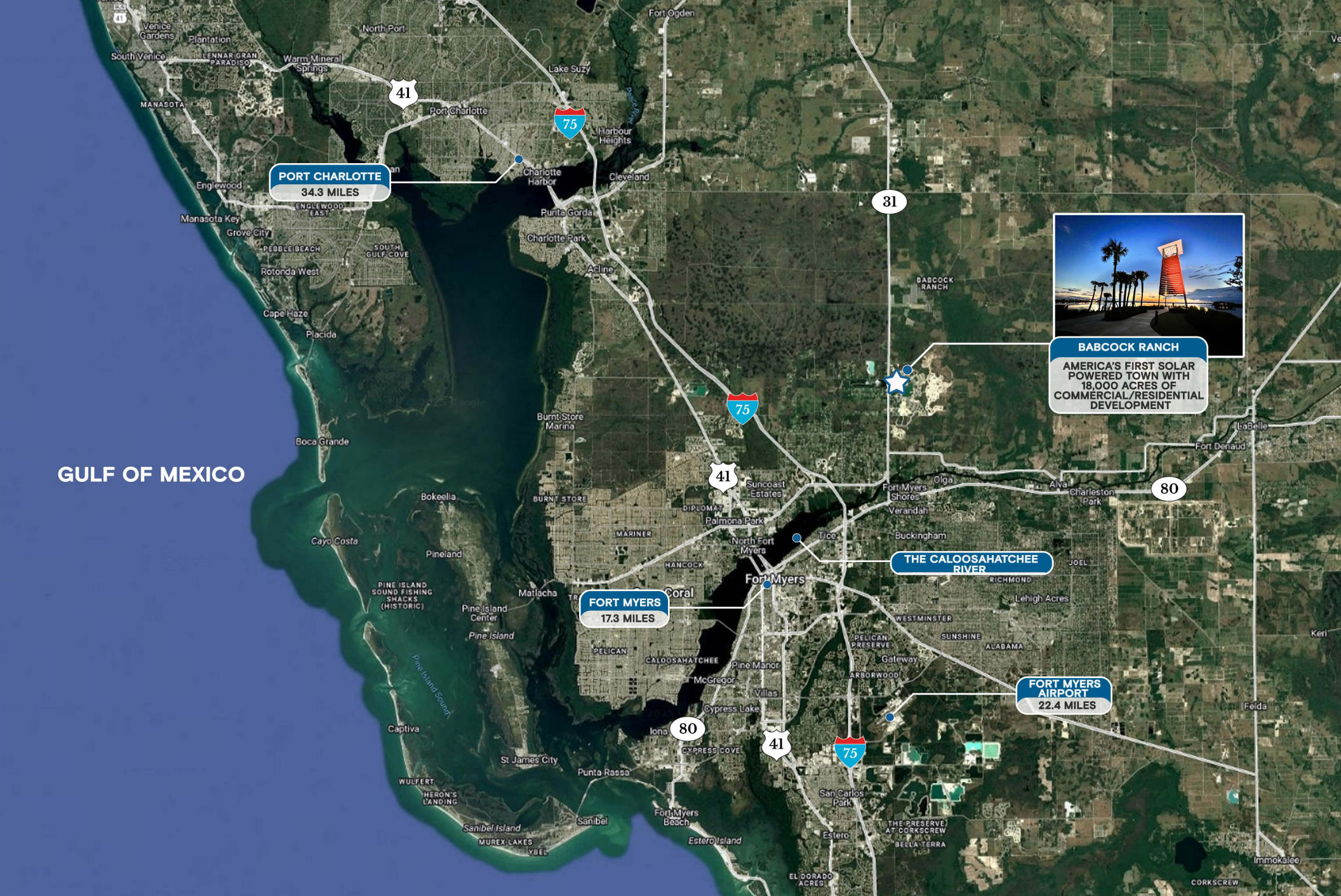
KITSON
— & PARTNERS —

Property Overview

HIGHLIGHTS

- ±5,482 SF turn key second floor office space in Woodlea Hall
- Seeking office users
- Ample parking
- Babcock Ranch is an 18,000 acre “new town” development in Southwest Florida which will have 21,000 homes and ±60,000 residents
- Babcock Ranch is entitled for 6 million square feet of commercial space
- Babcock Ranch is a top 10 selling master-planned community in the country
- First city in the United States powered by Solar Energy
- Join nearby retailers: **Publix** **Marshalls** **HomeGoods**



WOODLEA HALL
BABCOCK RANCH MAP

KATZ & ASSOCIATES
RETAIL REAL ESTATE ADVISORS



BABCOCK RANCH
KITSON
& PARTNERS



WOODLEA HALL
BABCOCK RANCH MAP

KATZ & ASSOCIATES
 RETAIL REAL ESTATE ADVISORS

 **BABCOCK RANCH**
KITSON
 & PARTNERS



Disclaimer: The information contained in this brochure is provided for general informational purposes only. The estimated rentable area of the space is approximate and subject to verification. While every effort has been made to ensure the accuracy of the information presented, neither the landlord, property manager, nor their agents make any representation or warranty as to the actual rentable area. Prospective tenants are encouraged to independently verify the actual dimensions and square footage of the space prior to entering into any lease agreement. All information is subject to change without notice.

WOODLEA HALL
CLOSE AERIAL

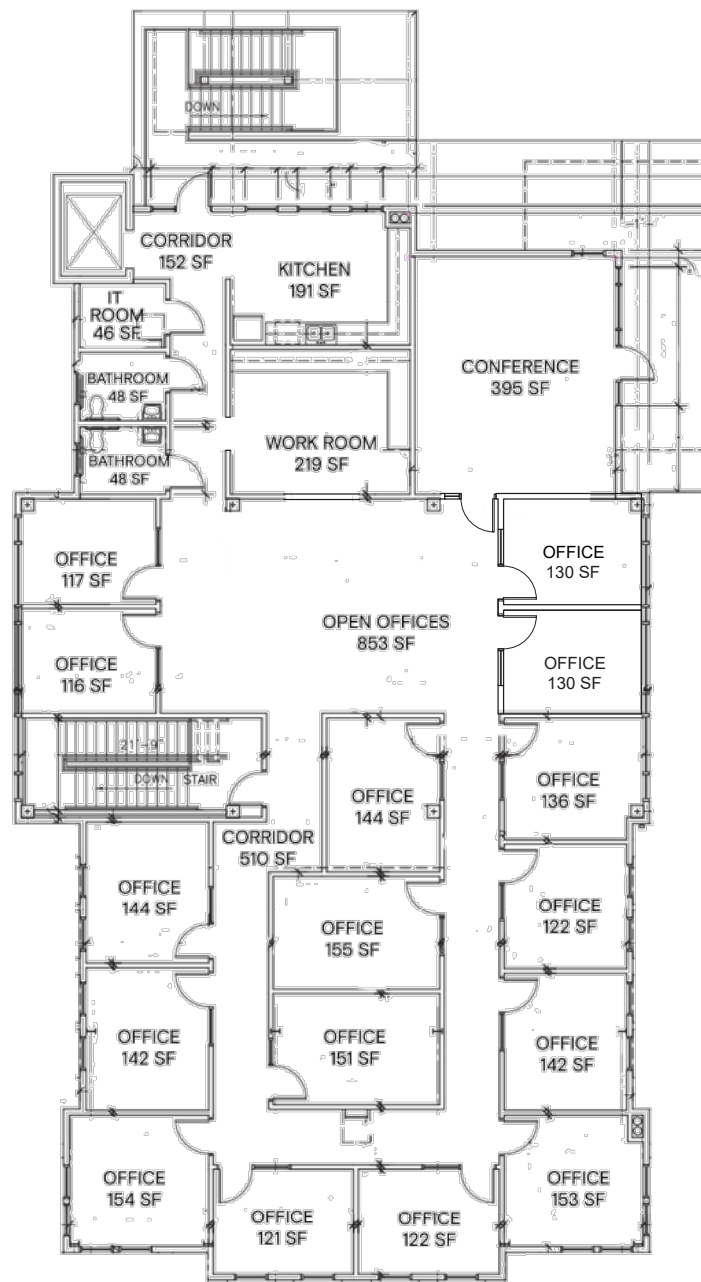
KATZ & ASSOCIATES

RETAIL REAL ESTATE ADVISORS



BABCOCK RANCH

KITSON
& PARTNERS



Disclaimer: The information contained in this brochure is provided for general informational purposes only. The estimated rentable area of the space is approximate and subject to verification. While every effort has been made to ensure the accuracy of the information presented, neither the landlord, property manager, nor their agents make any representation or warranty as to the actual rentable area. Prospective tenants are encouraged to independently verify the actual dimensions and square footage of the space prior to entering into any lease agreement. All information is subject to change without notice.

WOODLEA HALL 2ND FLOOR SITE PLAN

KATZ & ASSOCIATES

RETAIL REAL ESTATE ADVISORS



BABCOCK RANCH

KITSON & PARTNERS




**BABCOCK NEIGHBORHOOD
SCHOOL**
A-RATED FACILITY WITH
±2,000 STUDENT CAPACITY

**WILLIAM & MARY
ANN SMITH
SPORTS COMPLEX**


**PARKSIDE
170 HOMES**


**B STREET
120K SF MIXED USE
LIFESTYLE CENTER
2026 DELIVERY**

WOODLEA HALL
**DISCOVERY
CENTER**
±5,482 SF
TURN KEY OFFICE



BABCOCK RANCH

KITSON
— & PARTNERS —

Contact Agents

Lauren Powell
ASSOCIATE
laurenpowell@katzretail.com
(561) 869-4348

Allan Carlisle
SENIOR DIRECTOR
allancarlisle@katzretail.com
(561) 385-4791

Jason Lund
SENIOR DIRECTOR
jasonlund@dkatz.com
(301) 502-5947

Jon Cashion
PRINCIPAL
joncashion@katzretail.com
(561) 302-7071



KATZ & ASSOCIATES

RETAIL REAL ESTATE ADVISORS

katzretail.com

The information herein was obtained from third parties and has not been independently verified by Katz & Associates. Any and all interested parties should have their choice of experts inspect the property and verify all information. Katz & Associates makes no warranties or guarantees as to the information given to any prospective buyer or tenant. REV: 05.13.26

