



weston commons

GROCERY ANCHORED
NEIGHBORHOOD CENTER

4567 Weston Road
Weston, FL 33331

KATZ & ASSOCIATES

RETAIL REAL ESTATE ADVISORS

a shopper's haven

Weston Commons ~ Located in Weston, Florida, consistently ranked among the best places to live by Money Magazine, Family Circle, and USA Today—this highly affluent city boasts an impressive \$171K average household income, reflecting its luxurious appeal.

- Anchored by a strong performing Publix, Starbucks, Chili's, Bonefish Grill, Bank of America and mix of high-end retailers like MIA of London Jewelers, Isabel Boutique, Hydra Salon and The Gaia Spa.
- Average home prices in the \$800,000's with local communities in the millions.
- Conveniently located on Weston Road, at I75 and Griffin Road.

MUCH MORE THAN A GROCERY ANCHORED CENTER

FAMILY CENTRIC

Restaurants and retailers that cater to all age groups

SOON TO BE FOODIE DESTINATION

Second generation restaurant space available and new popular dining spots coming soon!

PENDING/FUTURE VACANCIES

Space from 750-5,000 SF

KATZ & ASSOCIATES



Publix®

SALLY BEAUTY®

pure barre®



Panera
BREAD®

BONEFISH
GRILL®

nuveen

affluent & suburban

Weston, a thriving master-planned community in Broward County, embodies the essence of modern South Florida living. Situated just 33 miles North of Miami, it's a serene escape from the bustling east coast. This affluent suburban haven is bordered by the expansive Everglades to the west, offering a tranquil retreat for those seeking a balance of luxury, nature, and privacy. Weston offers many elite country clubs and golf course communities to the higher end residents.

200K

Residents within 5 miles

\$162K–\$171K

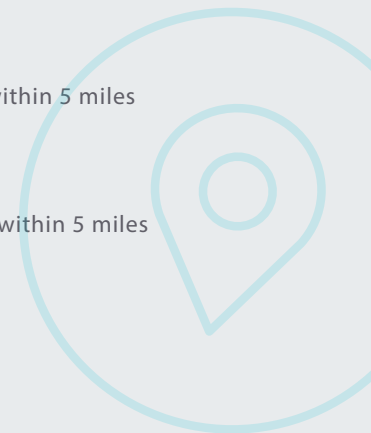
Average household income within 5 miles

55K

Average daytime population within 5 miles

\$808K

Average home value



nuveen

site plan



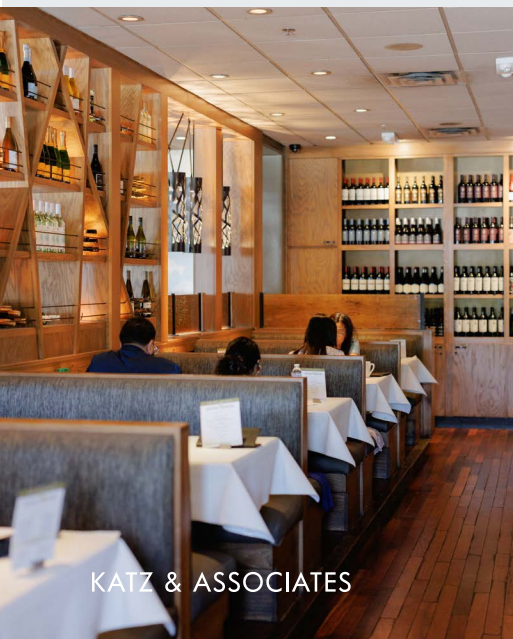
| | | |
|-----------|----------------------------|-----------|
| 4501 | Chase Bank | 4,000 SF |
| 4503-4505 | Starbucks | 2,500 SF |
| 4507 | UBreaklFix | 762 SF |
| 4509 | One Sotheby's Real Estate | 1,238 SF |
| 4511 | Wells Fargo | 4,232 SF |
| 4513 | Bank of America | 4,696 SF |
| 4515 | Chili's Bar & Grill | 5,594 SF |
| 4517 | Pei Wei | 3,100 SF |
| 4523 | Available | 1,700 SF |
| 4525 | European Wax Salon | 1,200 SF |
| 4527 | Anthony's Coal Fired Pizza | 2,100 SF |
| 4529 | MIA of London | 1,200 SF |
| 4531 | Isabel Boutique | 1,200 SF |
| 4533 | El Gallo Taqueria | 1,200 SF |
| 4535 | Cold Stone Creamery | 1,200 SF |
| 4537 | Dental Health Group | 3,000 SF |
| 4543 | Aries Physical Therapy | 1,500 SF |
| 4545 | Bonefish Grill | 5,000 SF |
| 4547 | Panera Bread Company | 4,500 SF |
| 4549 | Venetian Nail Spa | 2,080 SF |
| 4551 | 4Ever Young | 2,060 SF |
| 4553 | Solis Mammography | 2,940 SF |
| 4555 | Available | 5,000 SF |
| 4561 | Hydra Salon | 1,260 SF |
| 4563 | Gaia Spa | 2,240 SF |
| 4565 | Sally's Beauty Salon | 2,100 SF |
| 4567 | Publix | 44,840 SF |
| 4569 | Publix Liquor | 1,400 SF |
| 4571 | The Smash | 1,400 SF |
| 4573 | White Lotus Boutique | 1,400 SF |
| 4575 | Pure Barre | 1,400 SF |
| 4577 | Weston Eye Center | 1,800 SF |
| 4579 | Little Hen | 1,800 SF |
| 4581 | The UPS Store | 1,080 SF |
| 4585 | Weston Rd Animal Hospital | 2,700 SF |
| 4587 | Body 20 | 1,500 SF |

market aerial



every store, every stop, all in one place

BRING GOOD COMPANY, UNWIND, & INDULGE



KATZ & ASSOCIATES



nuveen

contact

Karen Maerovitz
Senior Director
karenmaerovitz@katzretail.com
786.210.8837

Jennifer Houston
Senior Director
jenniferhouston@katzretail.com
561.400.4675

Jon Cashion
Principal
joncashion@katzretail.com
561.302.7071

Daniel Solomon, CCIM
Principal
danielsolomon@katzretail.com
954.401.2181

KATZ & ASSOCIATES

nuveen