

FOR LEASE

DELRAY CORNER

14804 - 14860 S MILITARY TRAIL, DELRAY BEACH, FL



BUILT-OUT RETAIL/OFFICE AVAILABILITY

EXCLUSIVE RETAIL LEASING

KATZ & ASSOCIATES

RETAIL REAL ESTATE ADVISORS

NICOLE FONTAINE
VICE PRESIDENT
nicolefontaine@katzretail.com
(561) 869-4350

LEANDRO PEREIRA
DIRECTOR
leandropereira@katzretail.com
(561) 504-3310

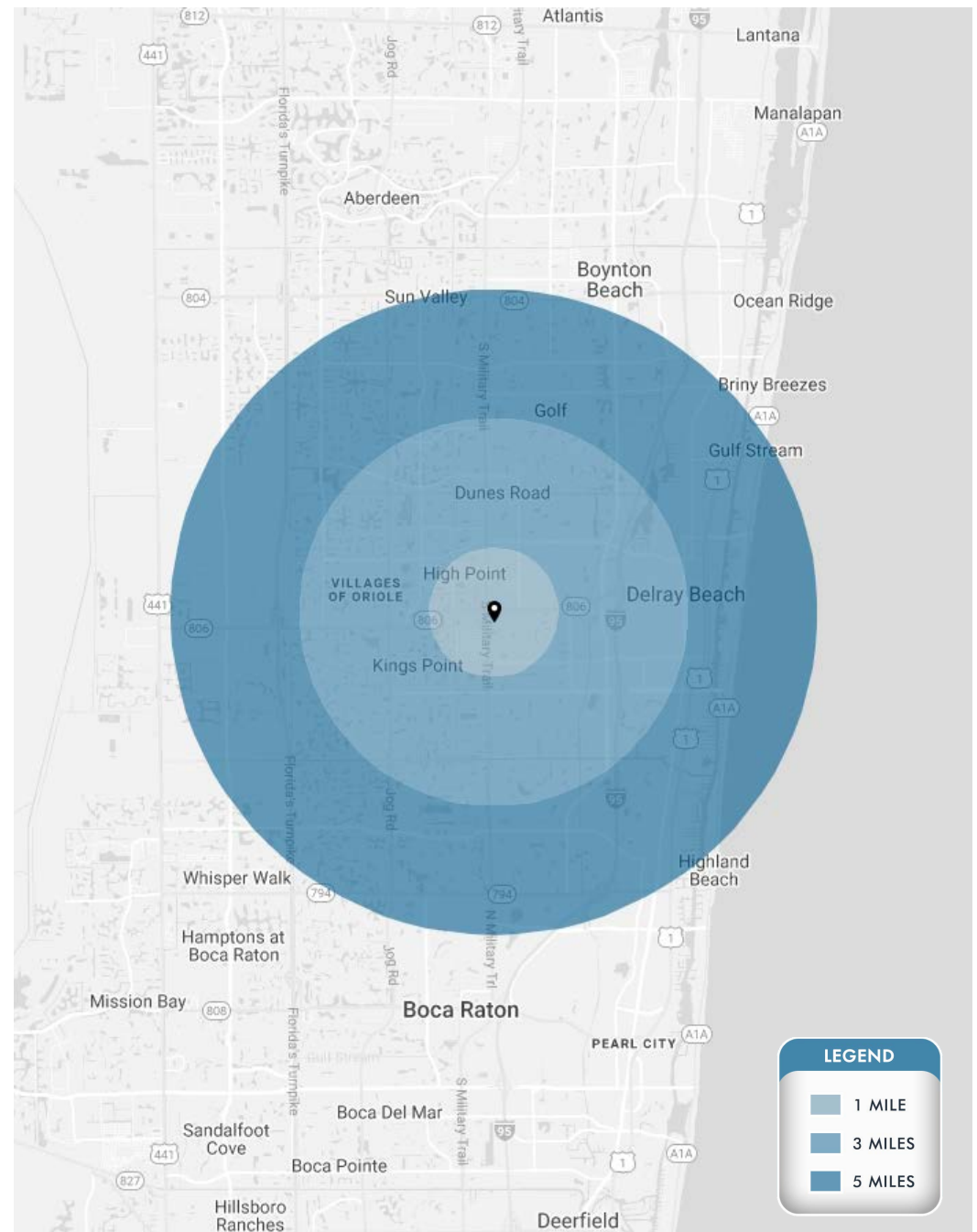
PROPERTY OVERVIEW

HIGHLIGHTS

- *Michaels* recently opened
- ±1,000 sf nicely built-out office space coming available
- Two ±1,000 SF newly build-out retail spaces available
- Strong co-tenancy:    *Michaels*
- 632' of frontage on West Atlantic Avenue
- Located in a prime retail location on the SEC of Atlantic Avenue and Military Trail at a signalized intersection
- Intersection is undergoing redevelopment on two corners bringing national and regional tenants to the area
- Located on the SE corner of Atlantic Avenue and Military Trail, the exciting new Delray Beach Overlay District is bringing beautification to the four corners
- 79,000 cars per day driving by the plaza

DEMOGRAPHICS

	1 Mile	3 Miles	5 Miles
POPULATION	11,251	107,904	225,408
HOUSEHOLDS	5,967	54,894	109,591
DAYTIME EMPLOYEES	10,233	97,414	200,959
AVERAGE HH INCOME	\$92,858	\$96,352	\$126,875



DELRAY CORNER | EXECUTIVE SUMMARY



TENANT ROSTER

14804 Taso's Greek Tavern	14816-18 Mario's Market	14830 Enterprise	14840 Hearing Aids	14848 Chloe & Co Barber & Stylists	14856 Jack's NYC Pizza
14806 Mathnasium	14820-48 Hacienda Mexican Restaurant	14832 Allstate	14842 1,000 SF Coming Available	14850 Cleaners	14860 Philly Grill
14808 Post Office	14824 Michaels	14834 Nails	14844 1,000 SF Available	14852 Opal Wings	
14812 Chaivo Thai Street Food	14826 Conviva Care	14838 Chiropractor	14846 1,000 SF Available	14854 Power Financial Credit Union	

DELRAY CORNER | SITE PLAN



DELRAY CORNER | PLAZA PICTURE

KATZ & ASSOCIATES
RETAIL REAL ESTATE ADVISORS



Google Earth

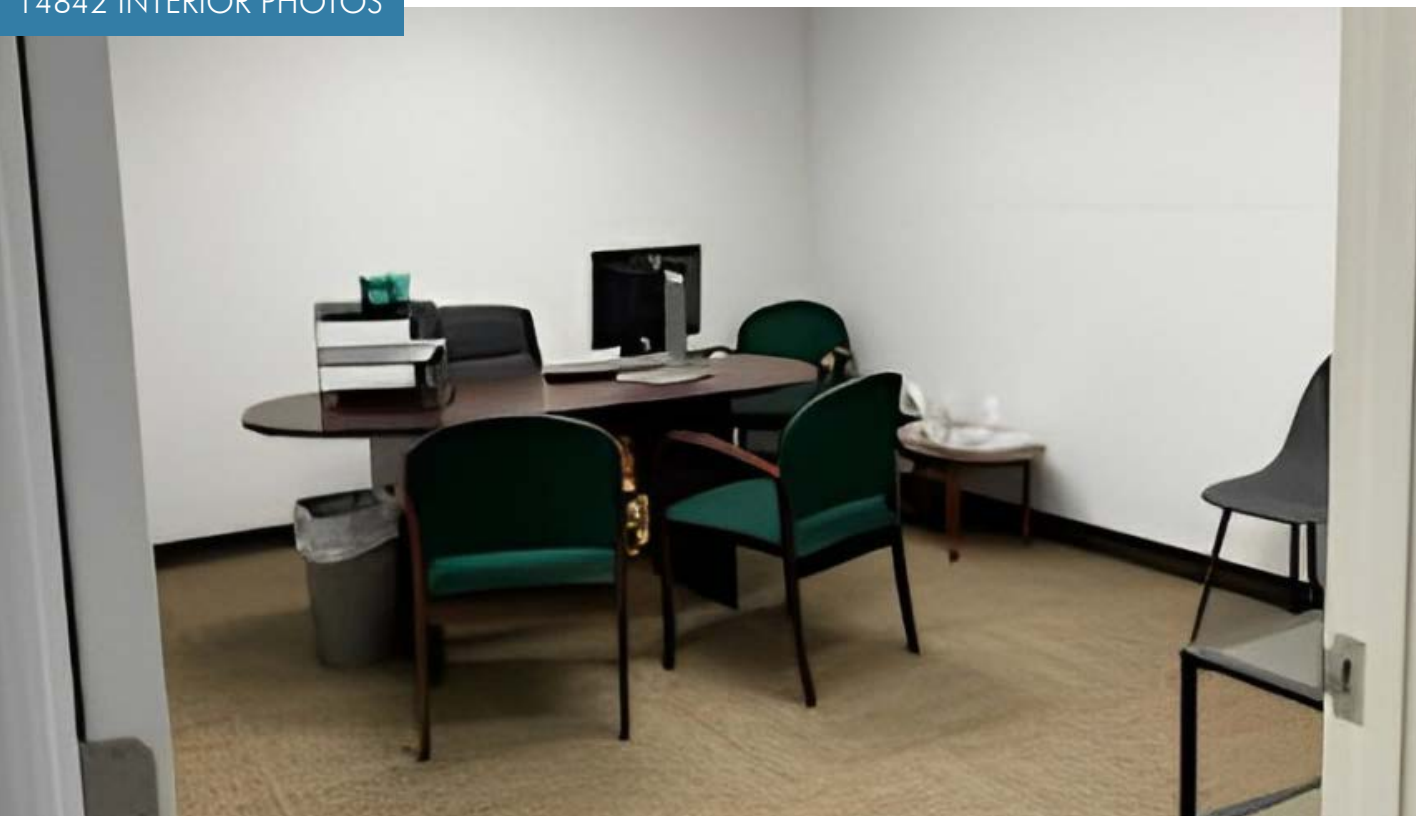


DELRAY CORNER | CLOSE INTERSECTION AERIAL

KATZ & ASSOCIATES
RETAIL REAL ESTATE ADVISORS



14842 INTERIOR PHOTOS



CONTACT AGENTS

NICOLE FONTAINE
VICE PRESIDENT
nfontaine@katzretail.com
(561) 869-4350

LEANDRO PEREIRA
DIRECTOR
leandropereira@katzretail.com
(561) 504-3310



KATZ & ASSOCIATES

RETAIL REAL ESTATE ADVISORS

katzretail.com

The information herein was obtained from third parties and has not been independently verified by Katz & Associates. Any and all interested parties should have their choice of experts inspect the property and verify all information. Katz & Associates makes no warranties or guarantees as to the information given to any prospective buyer or tenant. REV: 06.06.24