

LAST REMAINING SPACE

OAK PARK COMMONS

913 Oak Tree Avenue | South Plainfield, NJ 07080



EXCLUSIVE RETAIL LEASING

KATZ & ASSOCIATES

RETAIL REAL ESTATE ADVISORS

Jonathan Greenberg

VICE PRESIDENT

jonathangreenberg@katzretail.com

(917) 745-6473

Ian Goldfeder

ASSOCIATE

ian@katzretail.com

(845) 735-2254

Property Overview

HIGHLIGHTS

- 1,800 SF endcap available
- 139,000 SF shopping center
- Anchored by LA Fitness, Aldi, and various national and regional tenants
- Excellent access and proximity to I-287, Garden State Parkway and New Jersey Turnpike
- High-income levels and high household spending levels in the local market

DEMOGRAPHICS

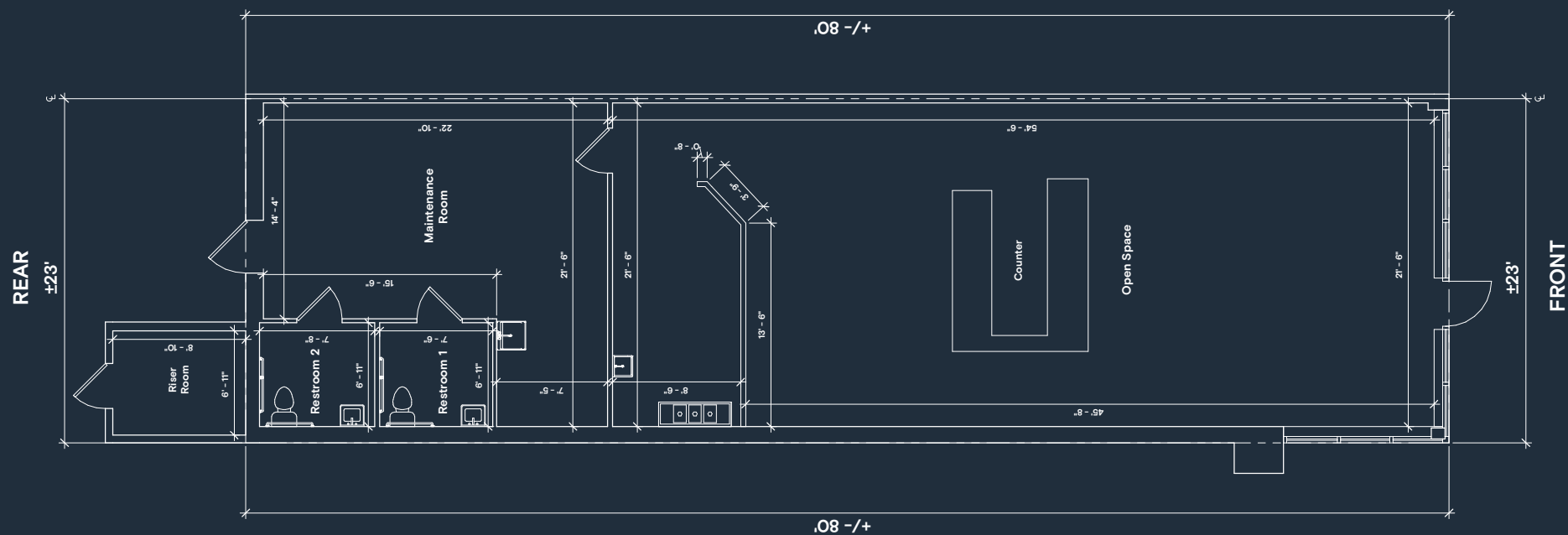
	1 MILE	3 MILES	5 MILES
POPULATION	7,509	111,418	358,593
HOUSEHOLDS	2,443	37,126	119,891
EMPLOYEES	3,940	43,629	138,730
AVERAGE HH INCOME	\$153,090	\$137,782	\$125,896

TRAFFIC COUNTS

OAK TREE AVENUE	18,158 AADT
PARK AVENUE	13,774 AADT



FLOOR PLAN





Tenant Roster

1	McDonald's	6B	Moonlight Day Spa	11B	Kumon Center	16	Diamond Braces
2	Wells Fargo	7	Coming Available 1,800	12	JAG Physical Therapy	18	Angel Tips Nails
3A	Popeye's Louisiana Chicken	8	Hunan Kitchen	13	Doctors Express	19	AT&T
3B	Desi Chowrastha	9	Carmen's Trattoria and Pizza	14A	EyeKrafters	20	Goodyear Tire
4	School of Rock	10A	LA Fitness	14B	Advance Auto Parts	21	CVS
5	Subway	10B	ALDI	14C	Dollar Tree		
6A	H&R Block	11A	Rewind Bar	15	Ranee Salon and Spa		





Contact Brokers

Jonathan Greenberg

VICE PRESIDENT

jonathangreenberg@katzretail.com

(917) 745-6473

Ian Goldfeder

ASSOCIATE

ian@katzretail.com

(845) 735-2254



KATZ & ASSOCIATES

RETAIL REAL ESTATE ADVISORS

katzretail.com

The information herein was obtained from third parties and has not been independently verified by Katz & Associates. Any and all interested parties should have their choice of experts inspect the property and verify all information. Katz & Associates makes no warranties or guarantees as to the information given to any prospective buyer or tenant. REV: 12.16.25