

RETAIL SPACE FOR LEASE

3,780 SF AVAILABLE

37-18/20 JUNCTION BOULEVARD | CORONA, NY 11368

BETWEEN 37TH AVENUE & ROOSEVELT AVENUE



EXCLUSIVE RETAIL LEASING

KATZ & ASSOCIATES

RETAIL REAL ESTATE ADVISORS

DANIEL D. DEPASQUALE
VICE PRESIDENT
ddd@katzretail.com
(212) 257-4996

PROPERTY OVERVIEW

HIGHLIGHTS

- Ground Floor: 3,780 SF + 3,410 SF Basement
- Rare "Junior Box" Space on Junction Blvd
- Perfectly located on one of Queens' best retail corridors
- Column Free Retail

ADDITIONAL INFO

CEILING HEIGHT:	11'
POSSESSION:	Arranged
FRONTAGE:	42'- 0"

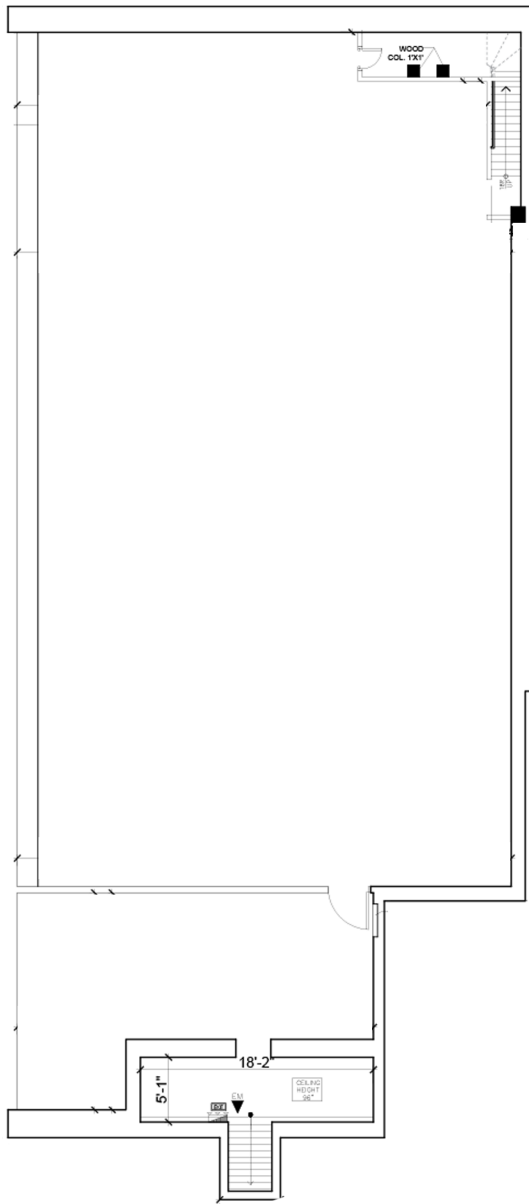
DEMOGRAPHICS

	.25 Mile	.5 Miles	.75 Miles
POPULATION	39,970	378,512	1,021,534
HOUSEHOLDS	14,529	141,800	356,930
DAYTIME EMPLOYEES	18,729	161,577	442,036
AVERAGE HH INCOME	\$108,999	\$99,145	\$100,200



37-18/20 JUNCTION BOULEVARD | EXECUTIVE SUMMARY

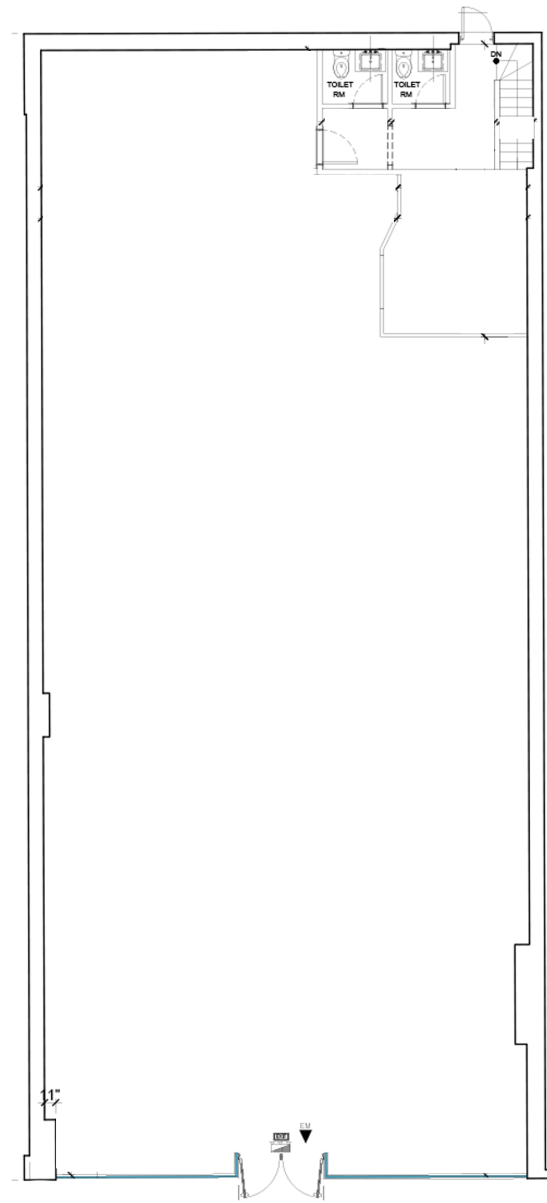
88'-4"



29'-5"

CELLAR

90'-0"



42'-0"

GROUND

37-18/20 JUNCTION BOULEVARD | FLOOR PLANS