

RETAIL SPACE FOR LEASE

11,500 SQUARE FEET FOR LEASE

163-34 Jamaica Avenue, Jamaica, NY 11432



AVAILABLE

ENTRY ↓

EXCLUSIVE RETAIL LEASING

KATZ & ASSOCIATES

RETAIL REAL ESTATE ADVISORS

Scott Sher
MANAGING DIRECTOR
scottsher@katzretail.com
(212) 257-5060

Daniel D. DePasquale
VICE PRESIDENT
ddd@katzretail.com
(212) 257-4996

Property Overview

HIGHLIGHTS

- Located in the heart Jamaica
- Dedicated Ground Floor entryway with elevator
- Tremendous layout with limited column spacing
- Ideal for Fitness, Food Courts, Daycares, Gaming or Cultural Centers
- Come join Five Below, Burlington, Primark, H&M, Target, Footlocker, Skechers, Old Navy, Raising Cane's, Chipotle and many more

FRONTAGE:
12'

CEILING HEIGHTS:
10'6"

POSSESSION:
Immediate

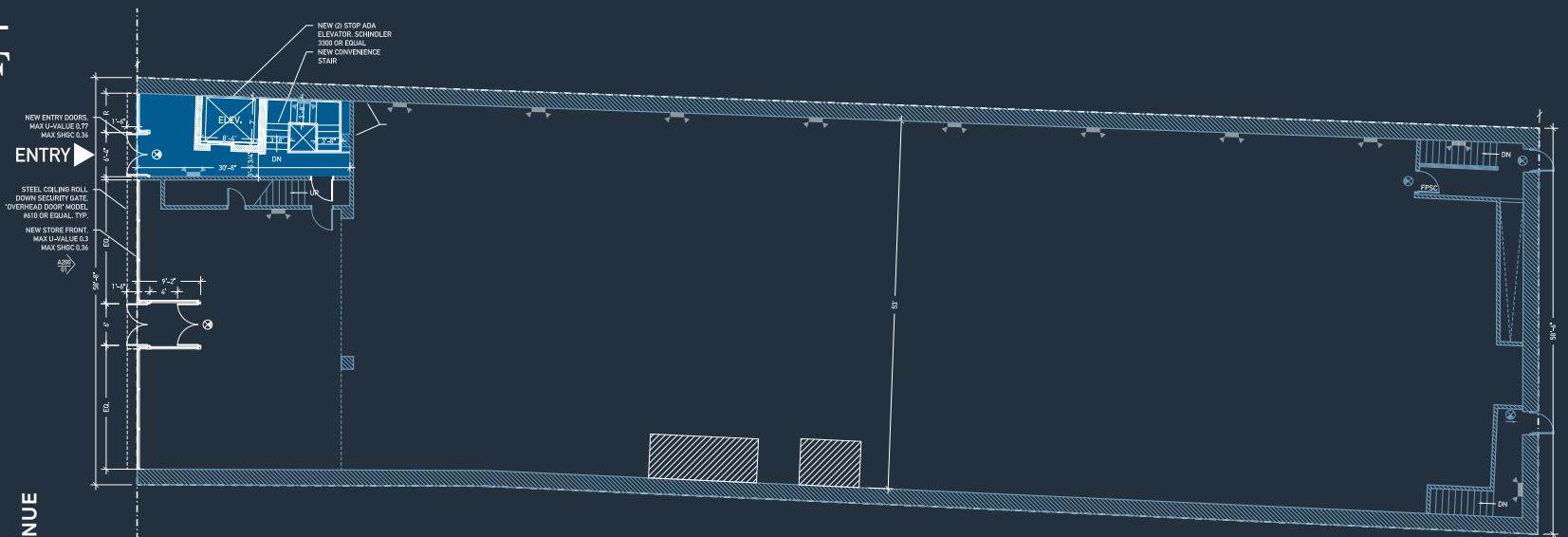
TRAFFIC COUNTS

JAMAICA AVENUE 23,826 AADT

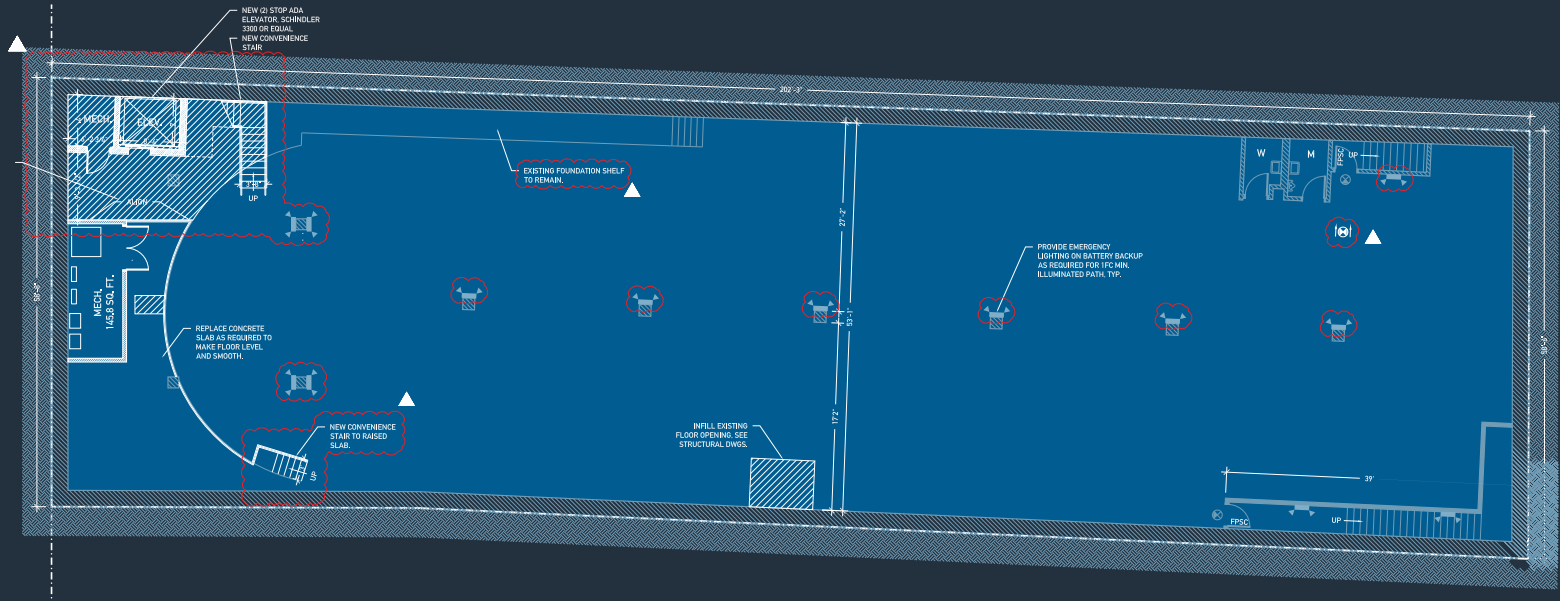
JAMAICA CENTER PARSONS/ARCHER **E J Z** 5,715,839 Ridership



GROUND LEVEL
431.1 SF



LOWER LEVEL
11,112.8 SF



SCALE: 1/8" = 1'-0"



DEMOGRAPHICS	0.25 MILES	0.5 MILES	0.75 MILES
POPULATION	5,009	31,327	76,093
HOUSEHOLDS	1,676	10,090	23,606
EMPLOYEES	4,044	25,262	61,501
AVERAGE HH INCOME	\$69,247	\$77,758	\$85,116



For More Information
Please Contact Brokers

Scott Sher
MANAGING DIRECTOR
scottsher@katzretail.com
(212) 257-5060

Daniel D. DePasquale
VICE PRESIDENT
ddd@katzretail.com
(212) 257-4996



KATZ & ASSOCIATES

RETAIL REAL ESTATE ADVISORS

katzretail.com

The information herein was obtained from third parties and has not been independently verified by Katz & Associates. Any and all interested parties should have their choice of experts inspect the property and verify all information. Katz & Associates makes no warranties or guarantees as to the information given to any prospective buyer or tenant. REV: 01.15.25