

FOR SALE | FOR LEASE | BUILD TO SUIT

# RETAIL PADS AND BOXES AVAILABLE

13225 US Highway 1, Sebastian, FL 32958

PRIME OUTPARCEL OPPORTUNITIES



VACANT, CLEARED READY FOR DEVELOPMENT

EXCLUSIVE RETAIL LISTING

## KATZ & ASSOCIATES

RETAIL REAL ESTATE ADVISORS

Allan Carlisle  
SENIOR DIRECTOR  
allancarlisle@katzretail.com  
(561) 385-4791

Jon Cashion  
PRINCIPAL  
joncashion@katzretail.com  
(561) 302-7071

# Property Overview

## HIGHLIGHTS

- ±17 acre vacant land
- Mixed-use, commercial, hotel or residential development
- Zoned CR: Commercial Riverfront
- Liberal zoning with a multitude of approved uses
- Strategically located at the 50 yard line of the Sebastian retail corridor along US Highway 1
- Join neighboring tenants:

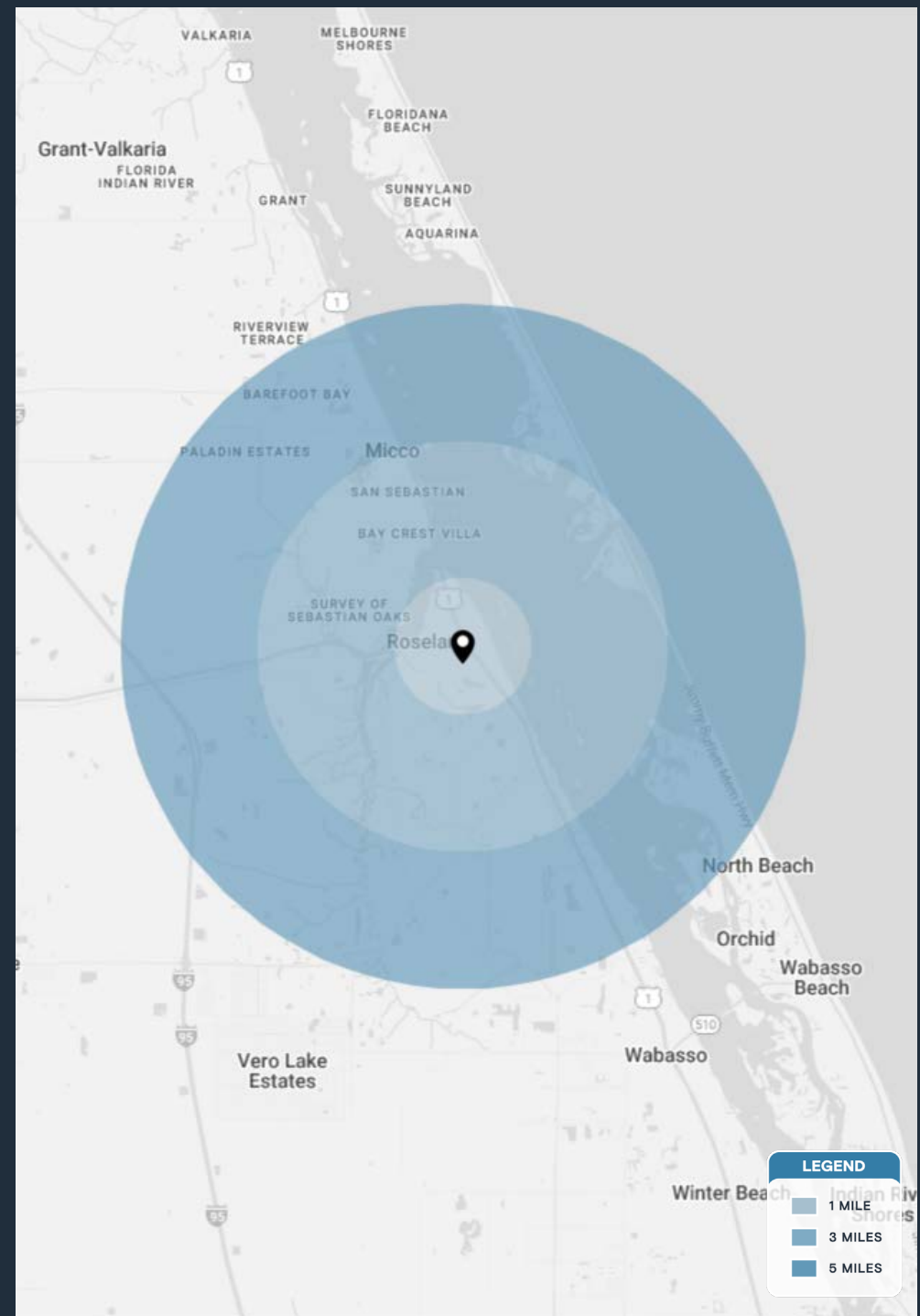


## DEMOGRAPHICS

	1 MILE	3 MILES	5 MILES
POPULATION	1,554	11,925	35,641
HOUSEHOLDS	807	5,929	17,414
EMPLOYEES	1,933	4,086	6,369
AVERAGE HH INCOME	\$136,014	\$92,455	\$90,110

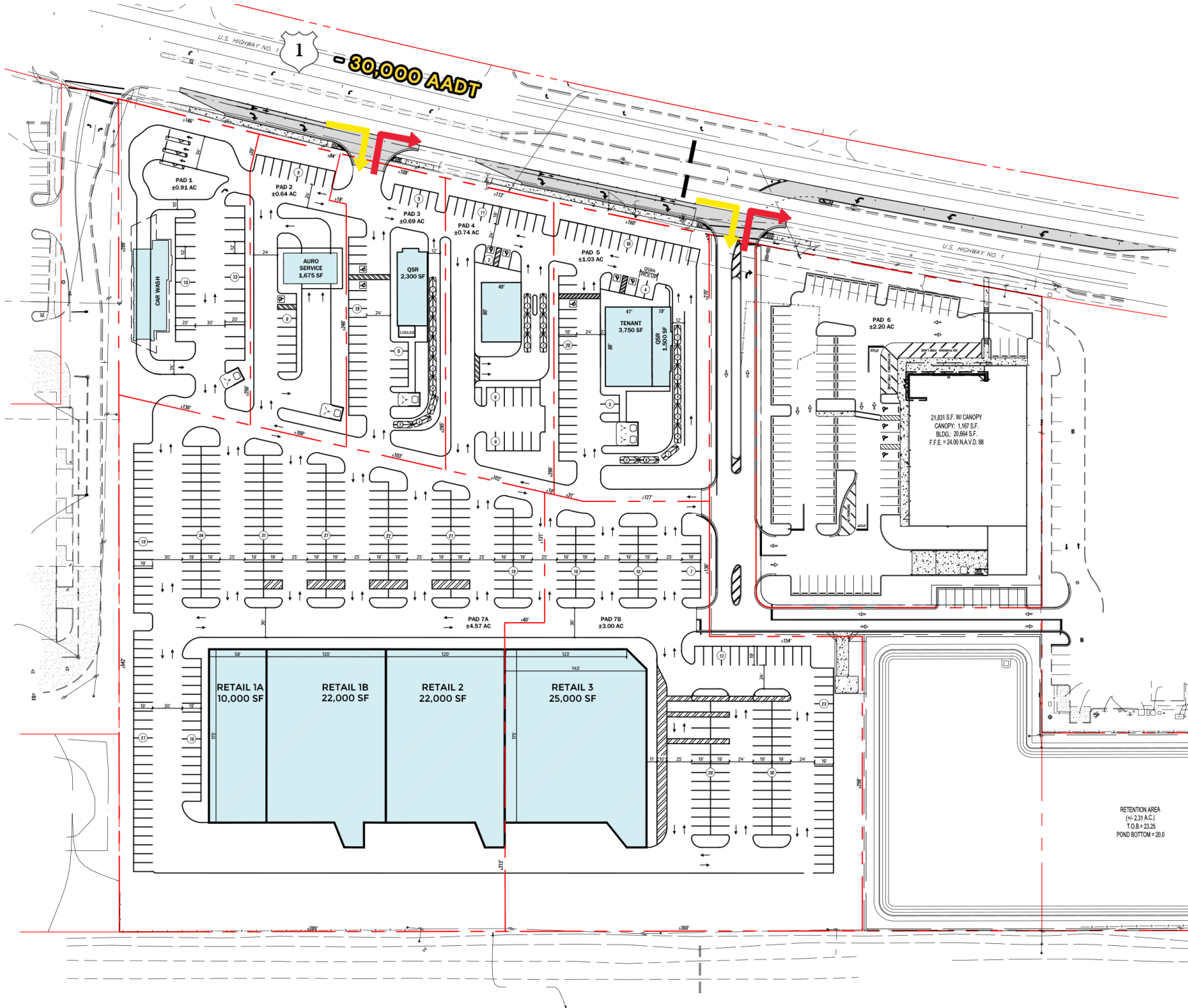
  

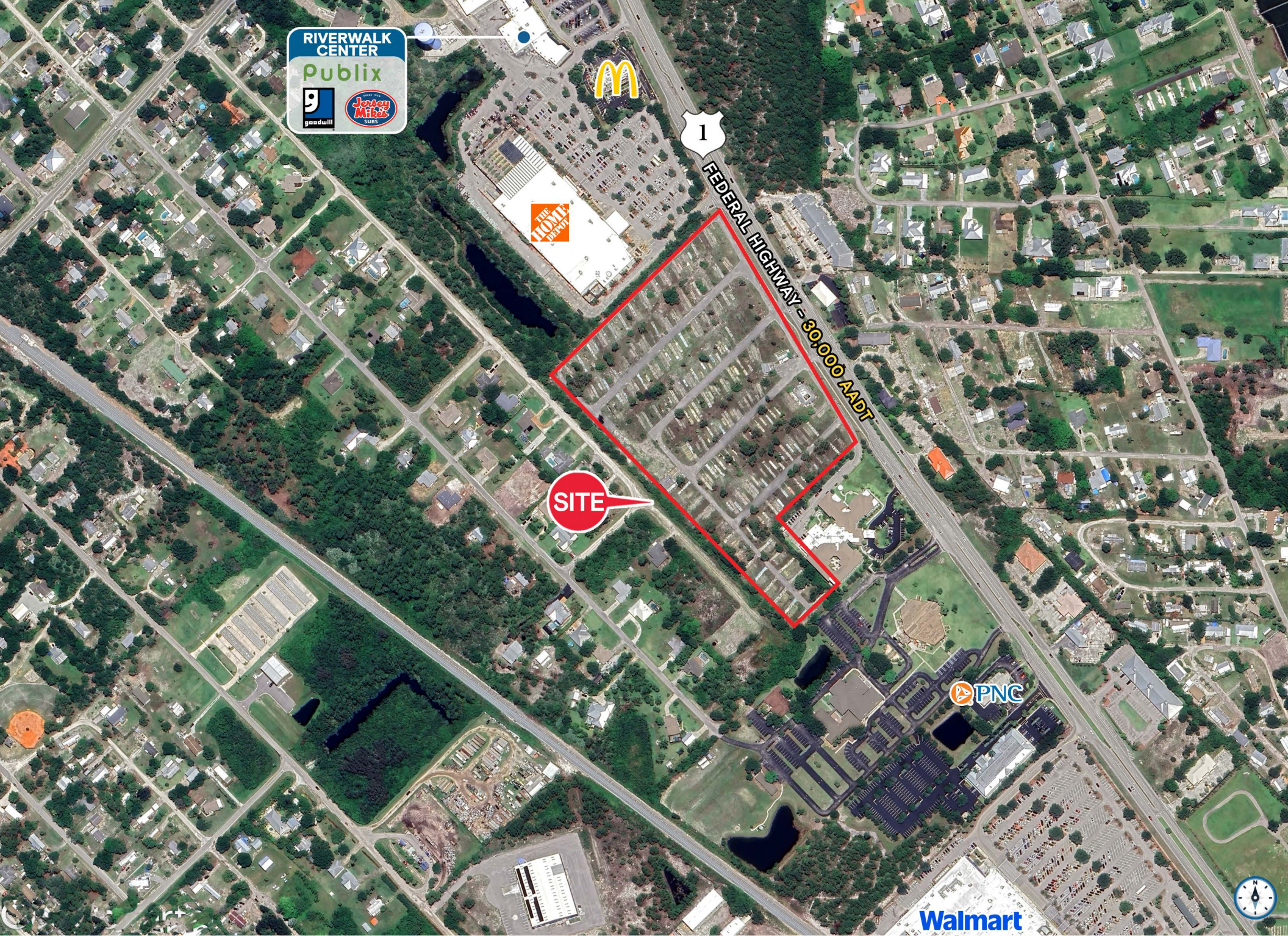
	5 MINUTES	10 MINUTES	15 MINUTES
POPULATION	5,408	26,328	45,341
HOUSEHOLDS	2,789	12,807	21,533
EMPLOYEES	2,921	5,793	7,419
AVERAGE HH INCOME	\$94,297	\$90,002	\$91,692



**LEGEND**

- 1 MILE
- 3 MILES
- 5 MILES





RIVERWALK CENTER  
Publix  
9 goodwill  
Jonny Mikes SUBS

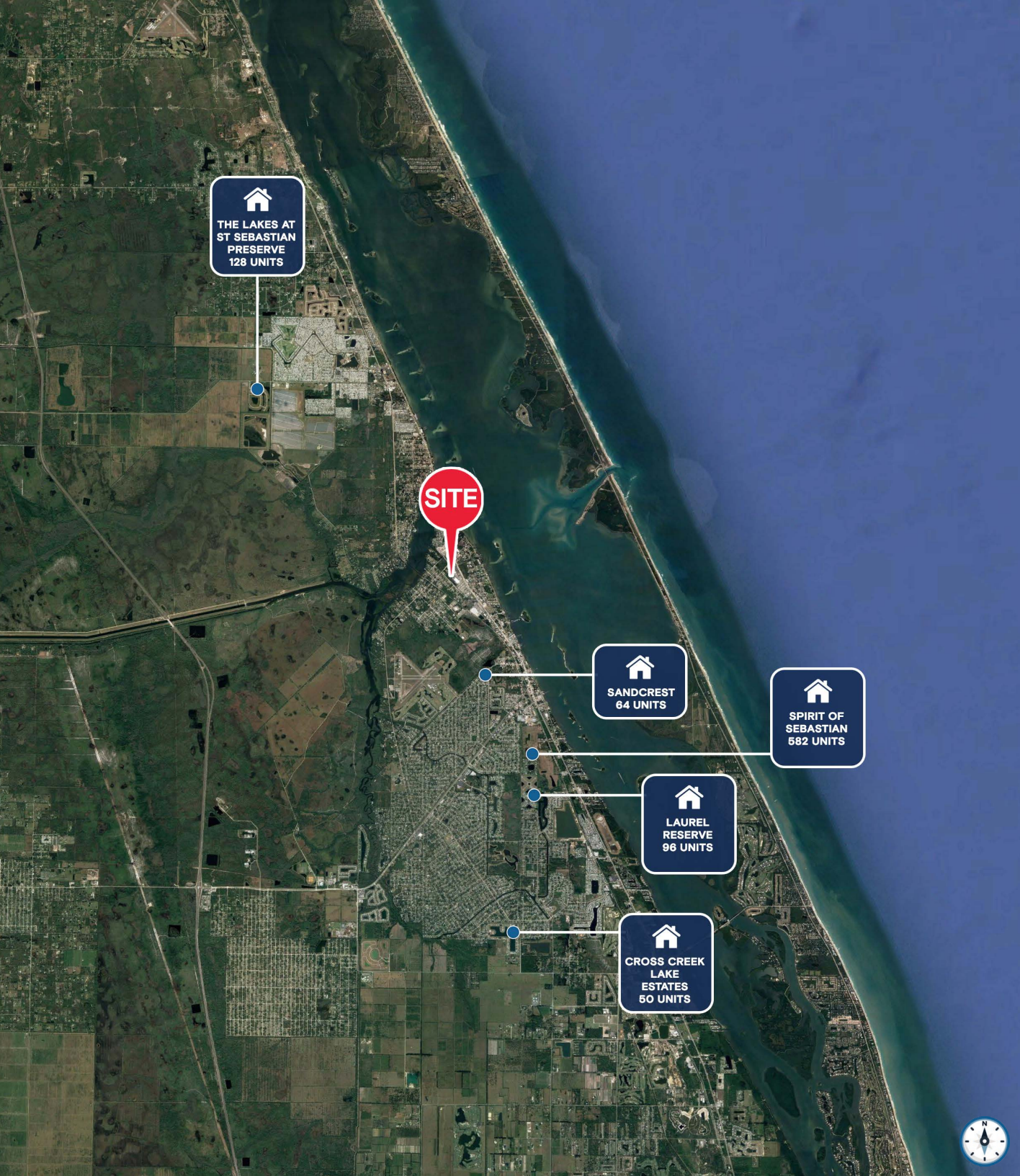
SITE

1  
FEDERAL HIGHWAY - 80,000 ADT

PNC

Walmart





# Contact Brokers

Allan Carlisle  
SENIOR DIRECTOR  
allancarlisle@katzretail.com  
(561) 385-4791

Jon Cashion  
PRINCIPAL  
joncashion@katzretail.com  
(561) 302-7071



## KATZ & ASSOCIATES

RETAIL REAL ESTATE ADVISORS

[katzretail.com](http://katzretail.com)

The information herein was obtained from third parties and has not been independently verified by Katz & Associates. Any and all interested parties should have their choice of experts inspect the property and verify all information. Katz & Associates makes no warranties or guarantees as to the information given to any prospective buyer or tenant. REV: 05.08.26