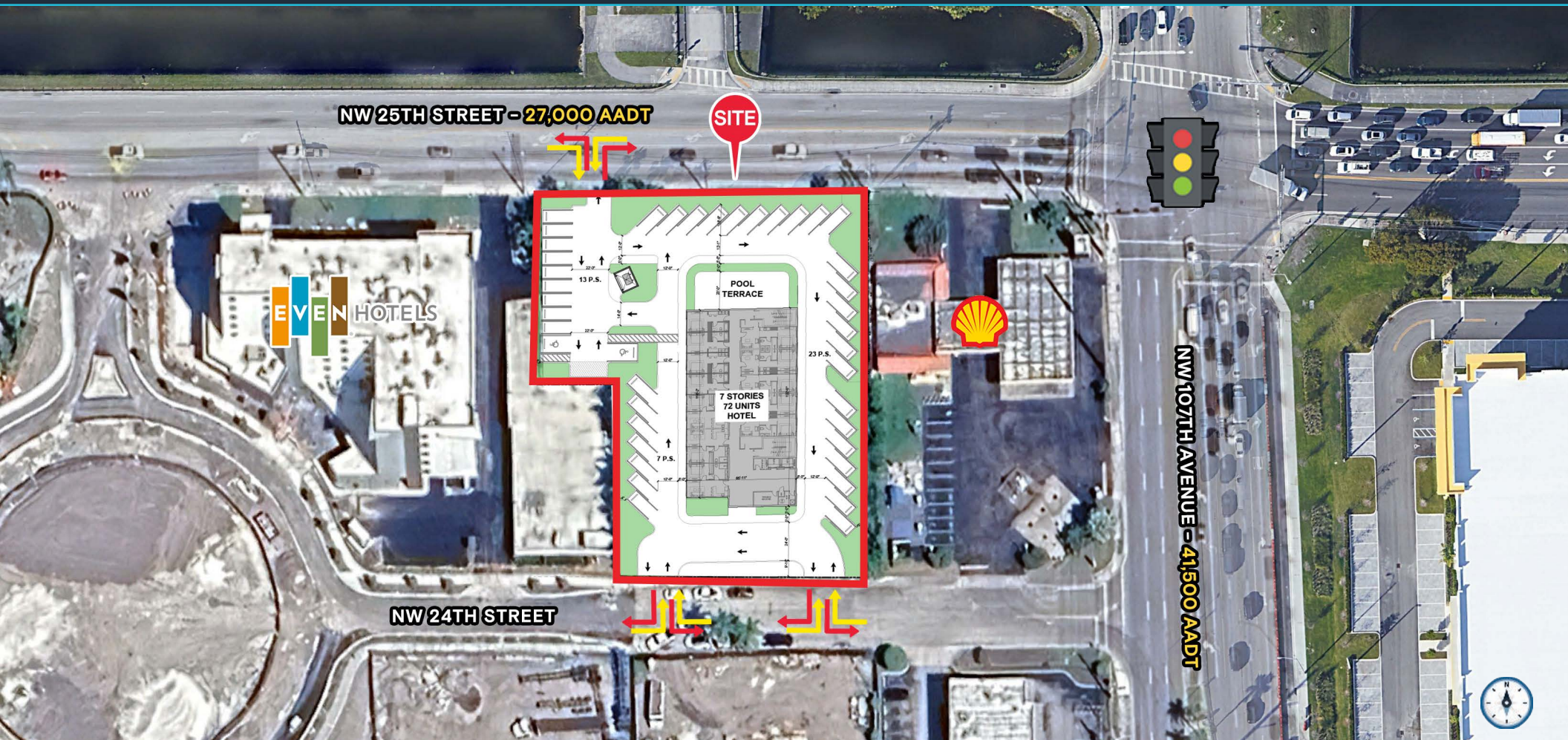


FOR GROUND LEASE

# PROPOSED 7-STORY/72 UNIT HOTEL SITE

10730-50 NW 25th Street, Doral (Sweetwater), FL 33172



FORMER “LA COVACHA” SITE FOR GROUND LEASE SEEKING HOTELS/RESTAURANTS

EXCLUSIVE LISTING

## KATZ & ASSOCIATES

RETAIL REAL ESTATE ADVISORS

**Karen Maerovitz**  
SENIOR DIRECTOR  
karenmaerovtiz@katzretail.com  
(786) 210-8837

**Daniel Solomon, CCIM**  
PRINCIPAL  
danielsolomon@katzretail.com  
(954) 401-2181

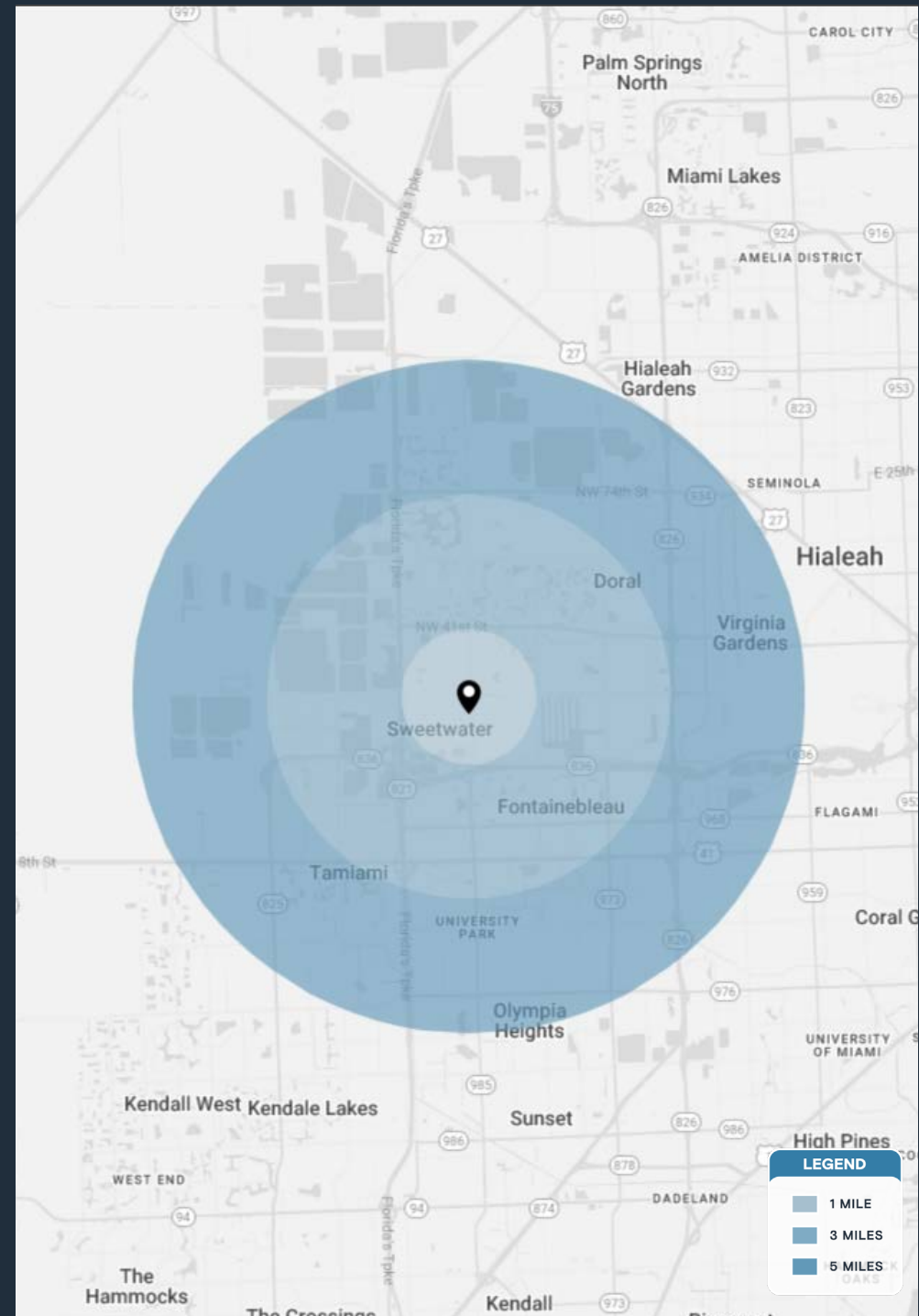
# Property Overview

## HIGHLIGHTS

- Proposed 7 Story / 72 unit hotel for ground lease
- Property sits on  $\pm 0.86$  acres
- Will also consider restaurants
- Located in the heart of the Doral market surrounded by dense residential and heavy daytime population
- Over 68,000 AADT at the intersection

DEMOGRAPHICS	1 MILE	3 MILES	5 MILES
POPULATION	4,076	149,473	320,432
HOUSEHOLDS	1,345	51,324	106,291
EMPLOYEES	3,397	125,490	270,790
AVERAGE HH INCOME	\$142,994	\$95,294	\$99,432

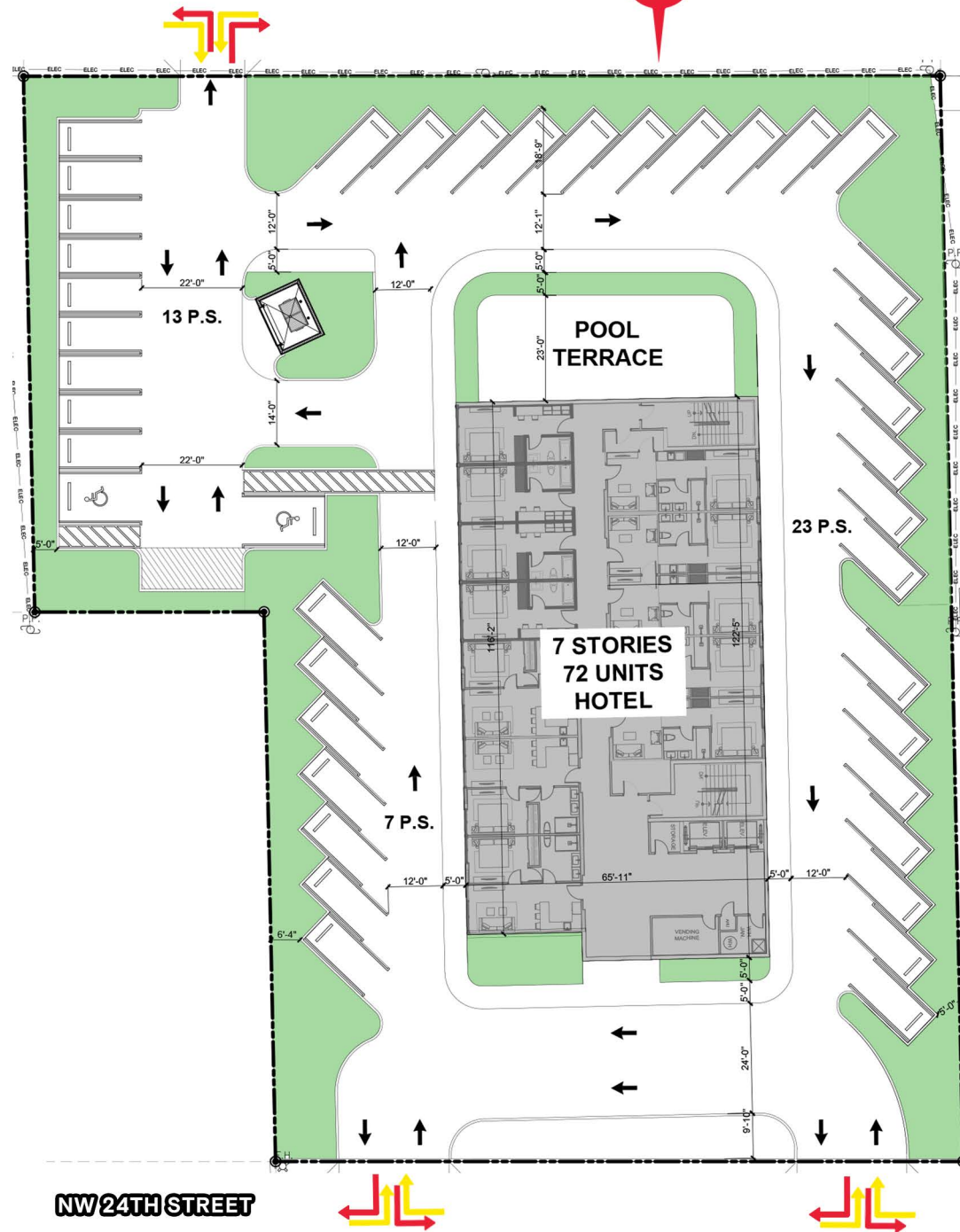
	5 MINUTES	10 MINUTES	15 MINUTES
POPULATION	42,636	232,201	401,613
HOUSEHOLDS	14,749	78,342	134,501
EMPLOYEES	35,629	195,198	339,339
AVERAGE HH INCOME	\$93,498	\$97,593	\$101,030

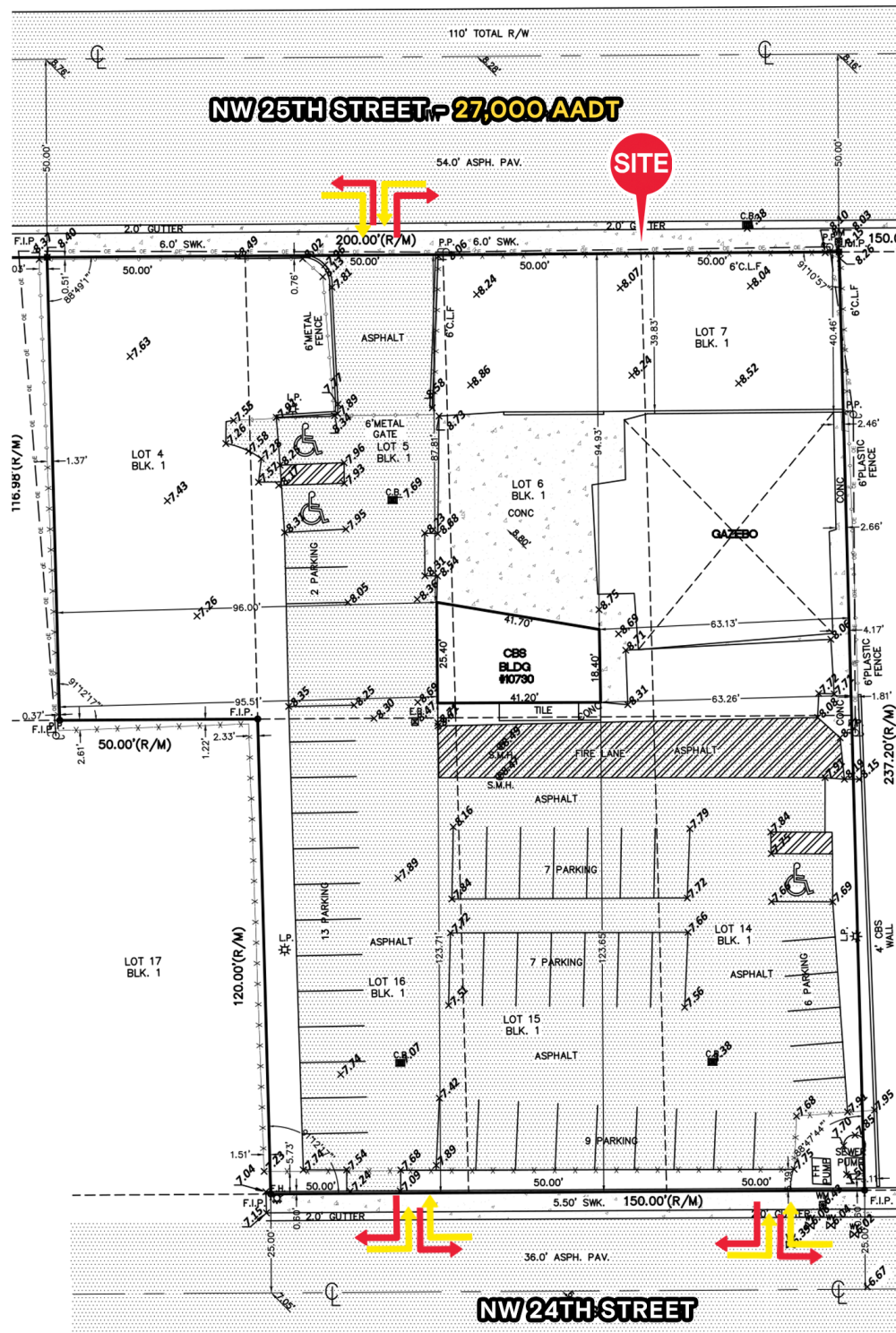




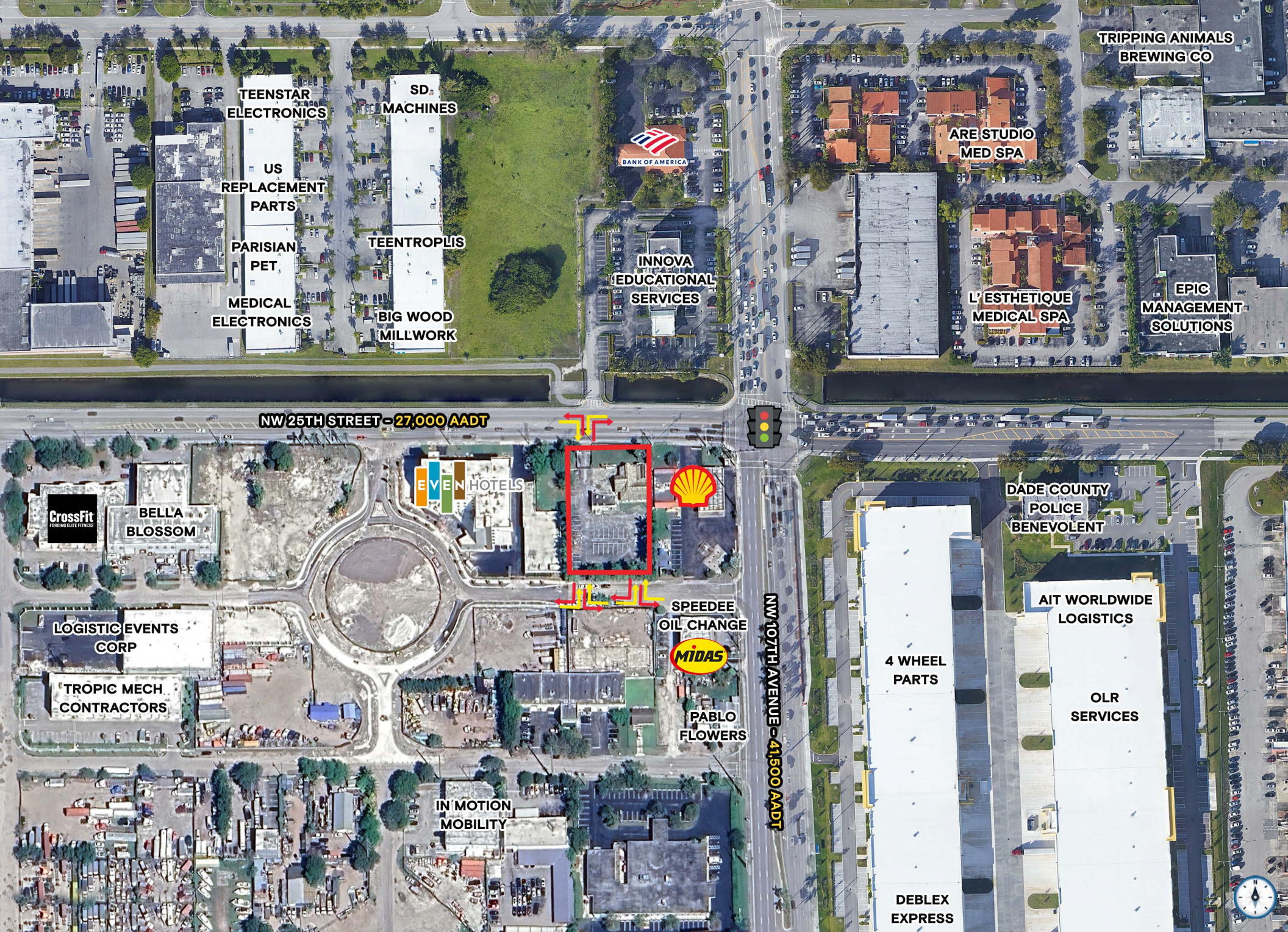
NW 25TH STREET - 27,000 AADT

SITE

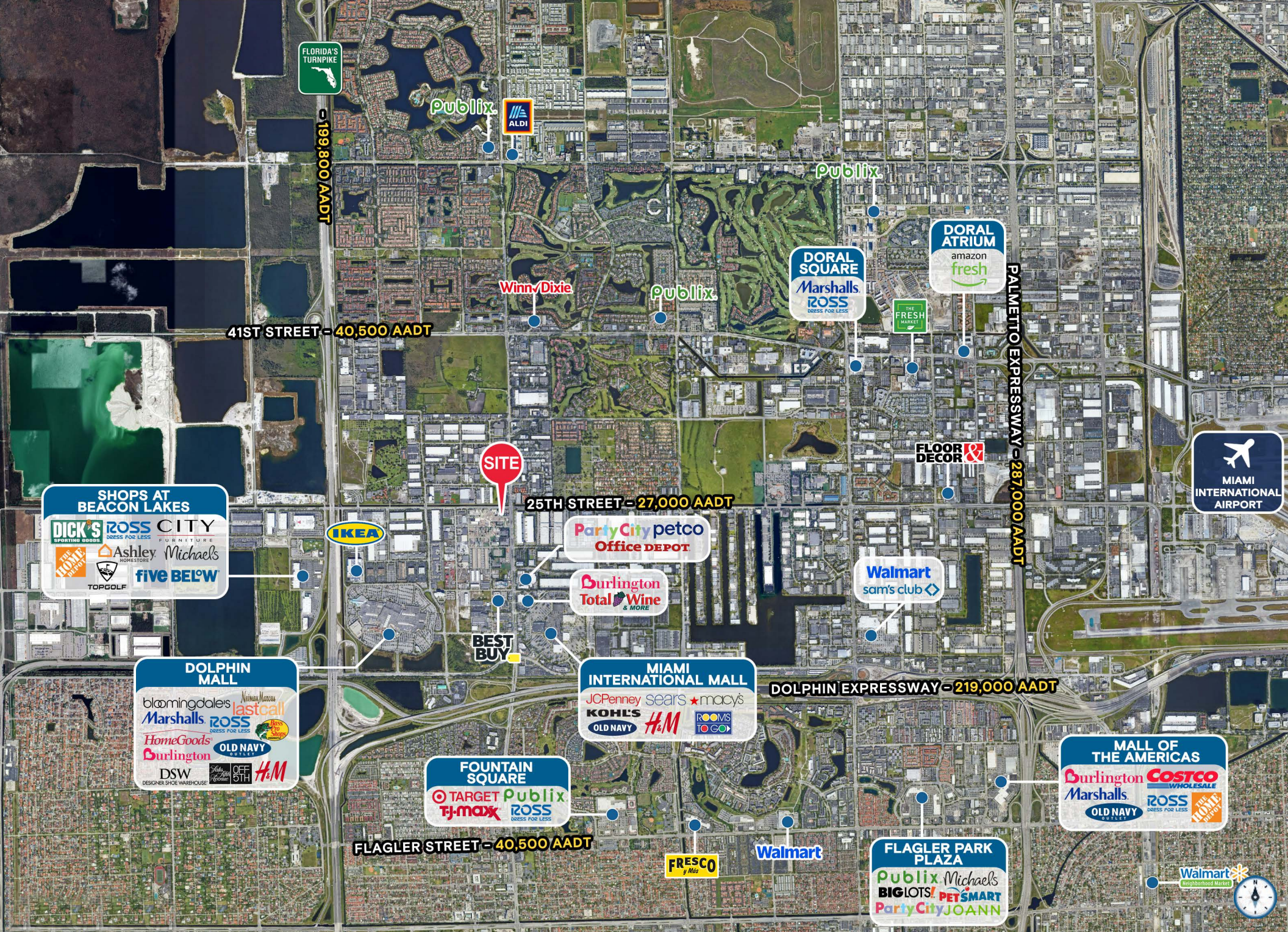














# Contact Broker

**Karen Maerovitz**  
SENIOR DIRECTOR  
karenmaerovitz@katzretail.com  
(786) 210-8837

**Daniel Solomon, CCIM**  
PRINCIPAL  
danielsolomon@katzretail.com  
(954) 401-2181



**KATZ & ASSOCIATES**

RETAIL REAL ESTATE ADVISORS

[katzretail.com](http://katzretail.com)

The information herein was obtained from third parties and has not been independently verified by Katz & Associates. Any and all interested parties should have their choice of experts inspect the property and verify all information. Katz & Associates makes no warranties or guarantees as to the information given to any prospective buyer or tenant. REV: 06.02.25