



**WHAT'S
HOT NOW!**

**CHAIRMAN'S
MESSAGE**

**CLIENT
SPOTLIGHTS**

**RECENTLY DONE
DEALS**

**FEATURED
PROPERTIES**

**TENANT
REPRESENTATION**





bevello boutique is a one-of-a-kind clothing boutique that started in Raleigh, NC. Each item at bevello is hand-picked from the collections of independent, up-and-coming American designers along with key designers: Kate Spade, Vince Camuto, Ugg's and Toms. You'll discover everything from darling dresses to stunning pieces of jewelry. Also, bevello rarely orders more than two of each size in each style, so you'll never see anyone else in your dress. The goal of bevello is to create a unique shopping experience for each customer that steps over the threshold. bevello operates 20 locations in 5 states with a majority of them in the 2,500 sf range. Expansion opportunities are sought in the Texas and Chicago areas, with continued interest in Carolina markets that have collegiate influence and strong demand for contemporary women's apparel. Newest openings: Tuscaloosa, AL; San Antonio, Houston, Dallas and Plano, TX. Coming Soon: Buckhead, Atlanta, GA.



What's Hot Now!

PGA Tour Superstore Comes to New Jersey



Hugh Scullin from Katz & Associates Corporation represented PGA Tour Superstore with its first PGA Tour Superstore in New Jersey. The 57,000-square-foot building is the site of the former Einstein Moomjy on Route 17 in Paramus, NJ. This Paramus, NJ location will be the 16th store in the chain. PGA Tour Superstore will be the 3rd golf retailer in Paramus competing with Golf Galaxy and Golfsmith. The retailer will be opening by Christmas 2012.

Contact Hugh Scullin at 845.735.2298 or hughscullin@dkatz.com



CHAIRMAN'S | MESSAGE



As this newsletter goes to press, the horrible impact of Hurricane Sandy is still being felt in the New York metropolitan area. Although we are looking forward to NY ICSC, we are mindful of the terrible impact that this storm has had on many lives. Our team remains extremely busy in numerous markets with various clients looking for further expansion. We are continuing to meet with retailers looking for help on a national, regional or local level. Please call to set up an appointment at NY ICSC or stop by our booth as shown below.

DAN | KATZ
Chairman & CEO
dkatz@dkatz.com | 845.735.6666 Ext.2428

DSW

DESIGNER SHOE WAREHOUSE®

Katz & Associates continues to represent DSW in its expansion across 16 states including NY,

NJ, CT, Eastern PA, MI, KY, NC, SC, GA, FL, AL, MS, LA, AR, TN and Puerto Rico.

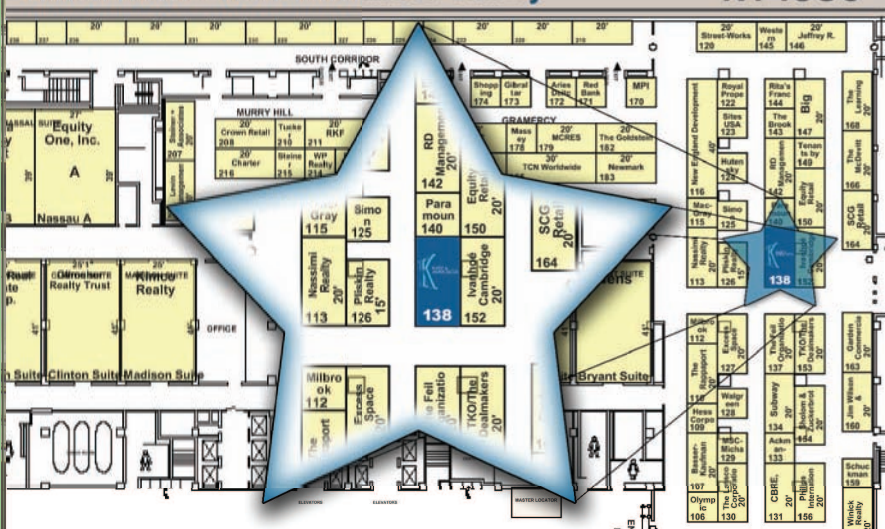
"DSW continues to grow and is actively seeking high quality locations in both suburban and urban markets," said Brian Katz. DSW has opened several locations in former Borders locations including recent openings in Ramsey, NJ, Bridgewater, NJ, Riverhead, NY, Syosset, NY and Lancaster, PA. DSW prototypical stores range between 17,500-22,000 sf and are typically located in power centers and/or highly visible freestanding locations. DSW is seeking new opportunities nationwide.

As of November 1, 2012, DSW operated 363 stores in 41 states, the District of Columbia and Puerto Rico, as well as 345 leased departments for other retailers in the United States. They also operate an e-commerce site, <http://www.dsw.com>, and a mobile site, <http://m.dsw.com>.



Hilton Hotel - 138 Rhinelander Gallery

NY ICSC



Savers is a privately held thrift store chain that operates nearly 300 stores across the United States, Canada and Australia. For nearly 60 years, Savers has been in the business of connecting communities and building a bridge between donors with surplus goods and shoppers who can give those goods another life instead of one in a landfill.

Savers currently operates three stores on Long Island and is in negotiation to add several additional units. Savers prototypical stores range between 20,000-30,000 square feet and are typically located in visible freestanding locations or end-cap positions within strip centers. Savers continues to seek additional Long Island units. For more information please contact Brian Katz @ briankatz@dkatz.com



CLIENT | SPOTLIGHTS



Paramus, NJ
Lease Signed



Brick, NJ
Lease Signed



Bay Plaza
Lease Signed



Collegeville, PA
Now Open

EXPANDING | RETAILERS

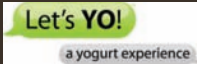
New Jersey



6,500 | SF



8,500 - 10,000 | SF



1,500 | SF

CONTACT



AMY | STAATS

amystaats@dkatz.com
845.735.2297



**Baristas, move over
Katz & Associates
Brings New Coffee
Concept to U.S.**

*Florida's First Location
Opened this Fall in
Pembroke Pines, FL*

Contact: Daniel Solomon
danielsolomon@dkatz.com
561.869.4351

Saks Fifth Avenue OFF 5TH is the premier source of discount designer clothing and accessories for the discerning outlet shopper
Expanding: Nationwide




A leading specialty retailer in the action sports industry selling clothing, shoes and accessories
Expanding In: MD, NJ, NY, PA, Northern VA & Washington D.C.



One of the largest and fastest-growing networks of dental care providers in the U.S.

Expanding In: South Florida:
Miami-Dade, Broward and
Palm Beach Counties



Find Us On 



Ushers in Style with South Florida Openings!

Discovery Clothing is Chicago's largest independently owned and operated clothing retailer! Hitting the mark with South Florida's ever changing style trends; Discovery Clothing offers name brands at affordable prices for today's budget savvy fashionistas.

Showing much success in Chicago with 28 current open stores over the last 25+ years, Discovery Clothing



took a step in the direction of expansion in Florida and selected Katz & Associates to help in those efforts with its initial start in the Tri-County Market (Palm Beach, Broward & Miami-Dade). This 15,000 sq. ft. retailer has since opened 2 stores in South Florida, Pembroke Crossing in Pembroke Pines and Miracle Mile in Miami with a third scheduled to open on November 9, 2012 at Tower Shops in Davie. They seek shopping centers with fashion retailers such as

Old Navy, TJ Maxx, Ross & ULTA and hope to open at least 3 to 4 stores this upcoming year throughout South Florida.



With David Emihovich and Martin Hennessy spearheading their expansion, both brokers are excited of the possibility of additional openings in other markets such as Tampa and Orlando. For more information, please contact the brokers at davidemihovich@dkatz.com or martinhennessy@dkatz.com.

SPOTLIGHT: Martin Hennessy

Marty has been a member of the Katz & Associates team for 13 years. He came to us with 22 years of experience under his belt from Hallmark Cards as a Retail Development Specialist in the Pennsylvania/Ohio Region, Real Estate Representative for the Midwest Region (IL, MI, IN, IO, WI) and Director of Real Estate for the Eastern US.



During his term with Hallmark Cards, he managed the east coast real estate representatives, store design, and was responsible for the relocation, renewals and new store growth for over 2,500 stores which included malls, strips, lifestyle centers, downtown & freestanding. During his employment, he was awarded the RB Hallmark Award for top sales and real estate, six times.

Joining Katz & Associates in June of 1999, he successfully opened the new Southeast Florida office in Boca Raton. This office has grown to house multiple brokers along with a staff that produces well over 100 deals per year. Since being a part of Katz & Associates, Marty has been a top producer year in and out, completing a deal in almost every market in FL, TN, AL, MS, LA, AR and most recently Puerto Rico! His client list includes Jos. A. Bank, ULTA Cosmetics, DSW, Saks Fifth Avenue OFF 5TH, PetSupermarket, Bath & Body Works, Discovery Clothing, Torrid and more. Marty is a graduate of PACE University in New York and has three children (two out of college from the University of Delaware and Penn State and his youngest is currently a freshman at FSU). During his off time, he is an avid snow and water skier, plays basketball and enjoys cycling.

The largest beauty retailer that provides one-stop shopping for prestige, mass & salon products & services in the US

Expanding In: Florida excluding Miami-Dade County



Featuring Wolfgang Puck's famed wood-oven baked pizzas and paying tribute to Italy through pastas and specialty dishes

Expanding: Nationwide



Retro Fitness offers an upscale environment, with the most up-to-date equipment at a very competitive monthly fee

Expanding In: NY Metro; Charlotte, Raleigh, NC

RECENTLY DONE | DEALS

ANNA'S LINENS

Atlanta | GA
Tannehill | AL
Stone Mountain | GA



Syosset | NY
Westbury | NY
Jersey City | NJ
North Plainfield | NJ
Tappan | NY
Lacey | NJ



Lantana | FL



Davie | FL

Let's YO!
yogurt experience

Ocean | NJ
Franklin Twp | NJ
East Windsor | NJ
West Caldwell | NJ



Raleigh | NC

DSW

DESIGNER SHOE WAREHOUSE®
Cedar Hills | TX
Enfield | CT
Ramsey | NJ
Bridgewater | NJ
Harahan | LA
Lancaster | PA
Pensacola | FL
Saginaw | MI
Utica | NY
Riverhead | NY



St. Petersburg | FL



Salem | MA
New York | NY

hair cuttery

Dunedin | FL
Miami | FL
Tampa | FL



Collegeville | PA
Huntington | NY



Collegeville | PA
Costa Mesa | CA
Mission Viejo | CA
Tustin | CA



Charlotte | NC
Deland | FL
Mt. Dora | FL
Orlando | FL
Royal Palm Beach | FL

FEATURED | PROPERTIES



DELRAY MARKETPLACE

Delray Beach | FL

258,000+ SQ. FT.

For Further Information Please Contact:

LINDSEY ALEXANDER at lindseyalexander@dkatz.com
or PATRICIA WERHAHN at patriciawerhahn@dkatz.com



ROYAL EAGLE PLAZA

Coral Springs | FL

192,000+ SQ. FT.

For Further Information Please Contact:

LYNDA NAGY at lyndanagy@dkatz.com,
LINDSEY ALEXANDER at lindseyalexander@dkatz.com
or PATRICIA WERHAHN at patriciawerhahn@dkatz.com



530 ROUTE 17 NORTH

Paramus | NJ

25,100+ SQ. FT.

For Further Information Please Contact:

BRIAN KATZ at briankatz@dkatz.com or
AMY STAATS at amystaats@dkatz.com

TENANT | REPRESENTATION



Size: 1,200-1,500 sq. ft.

Expanding In: Florida: Brevard
to Monroe Counties

Contact: Daniel Solomon



AÉROPOSTALE

Size: 3,500-4,000 sq. ft.

Expanding In: Strip Centers
in Florida

Contact: David Emihovich



Size: 7,500 sq. ft.

Expanding In: North Carolina
& South Carolina

Contact: Julie Gardner



Size: 3,200 sq. ft.

Expanding In: South Florida;
Dade, Broward & Palm Beach
Counties

Contact: David Emihovich



avenue

Size: 4,000-5,000 sq. ft.

Expanding: Nationwide

Contact: Hugh Scullin,
Brian Katz, Martin Hennessy,
Julie Gardner



Bath & Body Works

Size: 6,000-7,000 sq. ft.

Expanding In: North Carolina
& South Carolina

Contact: David Stockwell



Bath & Body Works

Size: 3,000 sq. ft.

Expanding In: AL, NC, SC & TN

Contact: Martin Hennessy
Julie Gardner



bevello

Size: 2,000-3,000 sq. ft.

Expanding: Nationwide

Contact: Julie Gardner



Size: 7,000-9,000 sq. ft.
Expanding In: North/Central New Jersey
Contact: Amy Staats



Size: 4,000 sq. ft.
Expanding In: North Carolina
Contact: Julie Gardner



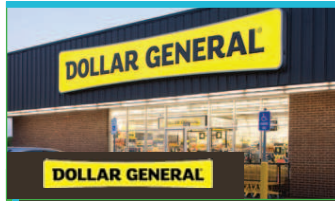
Size: 4,000-4,400 sq. ft.
Expanding In: Jacksonville South to Miami-Dade Cnty & SW Florida
Contact: David Emihovich



Size: 10,000 sq. ft. & 2 Acres
Expanding In: SW Florida: Sarasota to Naples; S Florida: Jupiter to Miami; FL Panhandle
Contact: David Emihovich



Size: 10,000-15,000 sq. ft.
Expanding In: Florida
Contact: Martin Hennessy
David Emihovich



Size: 9,100-16,000 sq. ft.
Expanding In: Miami-Dade Cnty
Contact: David Emihovich
Daniel Solomon



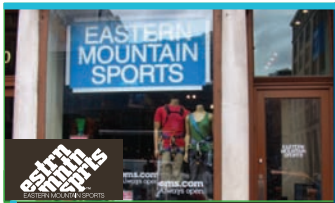
Size: 1,500-2,000 sq. ft.
Expanding In: South Florida
Contact: Lynda Nagy



Size: 17,500-22,000 sq. ft.
Expanding In: AL, AR, CT, FL, GA, KY, LA, MI, MS, NC, NJ, NY, Eastern PA, SC, TN & PR
Contact: Brian Katz,
Martin Hennessy, Julie Gardner



Size: 4,000 sq. ft.
Expanding In: New Jersey: Monmouth County & North
Contact: Amy Staats



Size: 12,000-15,000 sq. ft.
Expanding In: Northeast
Contact: Brian Katz

**NEIGHBORHOOD
BROKERAGE**

NATIONAL REACH

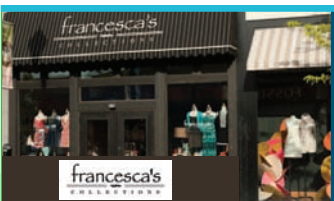


KATZ & ASSOCIATES

NY ICSC 138 Rhineland Gallery



Size: 6,500 sq. ft.
Expanding In: NC, SC, New Jersey: Monmouth County & North
Contact: Amy Staats
Julie Gardner



Size: 1,200-1,400 sq. ft.
Expanding In: North Carolina & South Carolina
Contact: Julie Gardner



Size: 1,200 sq. ft.
Expanding In: Charlotte Metro; Western NC
Contact: Julie Gardner



Size: 1,800-2,200 sq. ft.
Expanding In: South & Southwest Florida
Contact: Daniel Solomon



Size: 900-1,200 sq. ft.
Expanding In: Palm Beach to Brevard County
Contact: Daniel Solomon



Size: 500-1,000 sq. ft.
Expanding In: Charlotte, NC & Charleston, SC
Contact: David Stockwell



Size: 7,000-9,000 sq. ft.
Expanding In: North/Central New Jersey
Contact: Amy Staats



Size: 2,500 sq. ft.
Expanding In: North Carolina
Contact: Julie Gardner



Size: 4,000-5,000 sq. ft.
Expanding In: AL, AR, FL, LA, MS & TN
Contact: Martin Hennessy

journelle

Size: 1,200-1,500 sq. ft.
Expanding In: Manhattan, NY
Contact: Brian Katz

La Terrine

Size: 1,000-2,000 sq. ft.
Expanding In: Manhattan, NY
Contact: Brian Katz

Let's YO!
Yogurt experience

Size: 1,500 sq. ft.
Expanding In: NJ, NY & PA
Contact: Amy Staats

LIME
The Real Mexican Food

Size: 2,500 sq. ft.
Expanding In: New Jersey
Contact: Amy Staats

NAMCO

Size: 25,000-30,000 sq. ft.
Expanding In: Northeast
Contact: Brian Katz

Office DEPOT

Size: 16,000/6K - 7K sq. ft.
Expanding In: 395 N in Dade Cnty to 595 South in Broward Cnty
Contact: David Emihovich
Lindsey Alexander

PIT SUPERMARKET

Size: 7,000-9,000 sq. ft.
Expanding In: AL, FL, NC, SC, TN & VA
Contact: Martin Hennessy
David Emihovich
Julie Gardner

PGA TOUR SUPERSTORE

Size: 50,000 sq. ft.
Expanding In: North/Central New Jersey
Contact: Hugh Scullin

Retro Fitness

Size: 11,000-16,000 sq. ft.
Expanding: Nationwide
Contact: Brian Katz
Hugh Scullin
Julie Gardner

Saks Fifth Avenue OFF 5TH

Size: 28,000 sq. ft.
Expanding: Nationwide
Contact: Brian Katz
Martin Hennessy
Julie Gardner

SALONZ
Beauty salon

Size: 5,500-7,500 sq. ft.
Expanding In: Florida
Contact: David Emihovich
Lynda Nagy

savers

Size: 25,000-30,000 sq. ft.
Expanding In: NY Metro
Contact: Brian Katz

SECOND CUP COFFEE CO.

Size: 1,200-1,800 sq. ft.
Expanding In: Florida: Broward, Palm Beach, Lee, Collier & Charlotte Counties
Contact: Daniel Solomon

SEE

Size: 1,200 sq. ft.
Expanding In: North Carolina & South Carolina
Contact: Julie Gardner

STUDIO

Size: 35,000-40,000 sq. ft.
Expanding In: GA, NC, SC
Contact: Julie Gardner

TILLY'S

Size: 3,500-4,000 sq. ft.
Expanding In: North Carolina & South Carolina
Contact: David Stockwell

TEXAS ROAD HOUSE

Size: 6,300-7,200 sq. ft.
Expanding In: North Carolina & South Carolina
Contact: Julie Gardner

THE CHILDREN'S PLACE

Size: 3,200-4,000 sq. ft.
Expanding In: Florida & Puerto Rico
Contact: David Emihovich
Martin Hennessy

the PUB

Size: 6,000-7,000 sq. ft.
Expanding In: North Carolina & South Carolina
Contact: David Stockwell

TILLY'S

Size: 7,500-10,000 sq. ft.
Expanding In: MD, NJ, NY, PA, Northern VA & Washington D.C.
Contact: Brian Katz



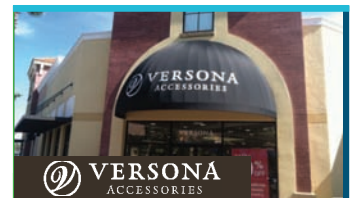
ULTA
Size: 10,000 sq. ft.
Expanding In: Florida excluding Miami-Dade County
Contact: Martin Hennessy
David Emihovich




UNCLE JULIO'S
Size: 8,500-10,000 sq. ft.
Expanding In: FL; Chicago, IL; Metro NY
Contact: Brian Katz,
Amy Staats, David Emihovich
Co-brokerage: Marlon Stone




verizon wireless
Size: 1,000-1,500 sq. ft.
Expanding In: Southeast FL
Contact: Daniel Solomon



VERISON
ACCESSORIES
Size: 8,000 sq. ft. +/-
Expanding In: North Carolina
Contact: Julie Gardner



VITAMIN WORLD
Size: 1,500-2,000 sq. ft.
Expanding In: Northern New Jersey
Contact: Brian Katz
Amy Staats



World
Size: 500-1,000 sq. ft.
Expanding: Nationwide
Contact: David Stockwell



WOLFGANG PUCK
PIZZERIA & CUCINA
Size: 4,000 sq. ft. +/-
Expanding: Nationwide
Contact: Julie Gardner



skincare WOO cosmetics
Size: 1,400 sq. ft.
Expanding In: North Carolina & South Carolina
Contact: Julie Gardner

CORPORATE OFFICE

ONE BLUE HILL PLAZA
SUITE 1440
PEARL RIVER, NY
P: 845.735.6666
F: 845.735.6680

Dan Katz
Chairman & CEO
dkatz@dkatz.com

Brian Katz
President & COO
briankatz@dkatz.com

Hugh Scullin
Broker Associate
hughscullin@dkatz.com

Amy Staats
Broker Associate
amystaats@dkatz.com

FLORIDA OFFICES

2300 GLADES RD, Ste 460W
BOCA RATON, FL
P: 561.361.7232

66 FLAGLER ST, Ste 310
MIAMI, FL
P: 305.503.0417

Martin Hennessy
Senior Vice President
martinhennessy@dkatz.com

David Emihovich
Senior Vice President
davidemihovich@dkatz.com

Lindsey Alexander
Real Estate Sales Associate
lindseyalexander@dkatz.com

Daniel Solomon
Real Estate Sales Associate
danielsolomon@dkatz.com

Lynda Nagy
Real Estate Sales Associate
lyndanagy@dkatz.com

Patricia Werhahn
Real Estate Sales Associate
patriciawerhahn@dkatz.com

NORTH CAROLINA OFFICE

4500 CAMERON VALLEY PKWY
SUITE 240
CHARLOTTE, NC
P: 704.362.5050
F: 704.362.5045

Julie Gardner
Senior Vice President
juliegardner@dkatz.com

David Stockwell
Broker Associate
davidstockwell@dkatz.com

Katy Figg
Associate
kathryfigg@dkatz.com

KATZ & ASSOCIATES IS ATTENDING THE NY ICSC BOOTH 138 RHINELANDER GALLERY

MAKE YOUR APPOINTMENTS TODAY!